



Students with disabilities

2025-2026

université
PARIS-SACLAY

PÔLE DIVERSITÉ ET HANDICAP

Direction Vie Etudiante et Egalité des Chances
(DVEEC)

Rue du Doyen André Guinier, 91400 ORSAY

✉ handicap.etudiant@universite-paris-saclay.fr





Each person is unique and so are their needs !

At Université Paris-Saclay, the Diversity and Disability Office (within the Student Life and Equal Opportunities Department - DVEEC) is here to support you every step of the way.

 **Contact us to receive personalized support and make the most of your student experience.**

What does it mean to live with a disability ?

Being in a situation of disability means facing difficulties in doing certain things in certain situations. In the context of university studies, it may mean needing adjustments or support in order to learn and succeed in the same way as other students.

Here are examples of visible and invisible types of disabilities:



PHYSICAL IMPAIRMENT
cerebral palsy, multiple sclerosis, ataxia, dyspraxia...



COGNITIVE DISABILITIES & LEARNING DIFFICULTIES
learning disorders (dyslexia, dyspraxia, dyscalculia), attention deficit disorders, autism...



VISUAL IMPAIRMENT
It can include anything from reduced vision to complete blindness.



MENTAL HEALTH CONDITIONS
depression, anxiety disorders, bipolar disorder, schizophrenia...



HEARING IMPAIRMENTS
It can range from mild hearing loss to total deafness



MEDICAL CONDITIONS
diabetes, epilepsy, Crohn's disease, sickle cell disease, cancer, severe asthma...

Learn more...





Do you need adjustments for your studies and/or exams?

1 ✓

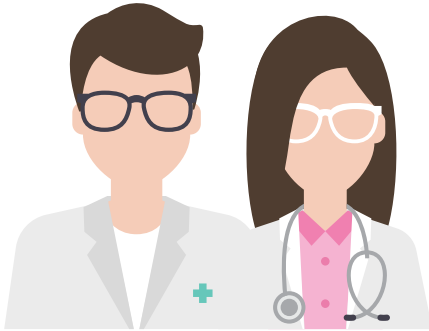
Contact the disability advisor in your department.

Your department's Disability Advisor is available to welcome you, guide you, and support you throughout your studies. They work closely with your academic team to organize any necessary adjustments for your courses, exams, or entrance competitions

2 ✓

Refer to the back for the list of contacts

Make an appointment as soon as possible with the Student Health Service (SSE) of your academic department.



Doctolib



25UPSSSE26

Procedure for making an appointment :

- Choose your academic department
- Select the specialty "Médecin préventif"
- Select the following category for your consultation: "Consultation médicale de prévention non thérapeutique (pour ESH aménagement)"
- Choose the consultation date





Possible academic adjustments



- Peer note taking during lectures and tutorials
- Course material in large print
- Temporary loan of a computer or specific equipment
- Elevator access badge
- Special loans at university libraries
- Extension of study duration
- Schedule adjustments and authorized absences
- Tutoring

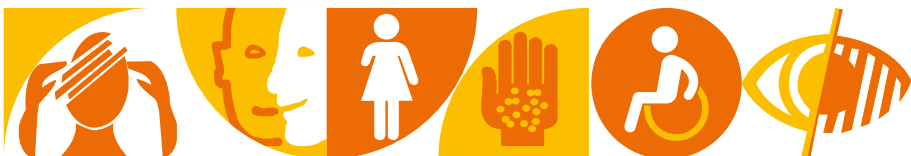
This list is not exhaustive, and other types of adjustments (such as a sign language interpreter, material support, etc.) may be recommended depending on the specific requirements of the academic program. For certain more specific educational accommodation needs, a multidisciplinary team — including the Disability Advisor of the academic department, the program coordinator, and the Student Health Service (SSE) — meets to determine and validate the appropriate arrangements in collaboration with the student.

Possible adjustments for exams and competitive entrance tests

- Extended time for written exams
- Large print of exam papers
- Use of a scribe to read exam question and dictate answers
- Use of technical aids
- Separate room for exams
- Use of a computer, with specific softwares if needed



This list is not exhaustive, other types of accommodations may be recommended in certain cases, depending on the specific requirements of the academic program and depending on your needs





I want to help and I'm committed



Become a note-taker, an exam scribe, or a tutor and help support the success of students with disabilities at the university!

Highlights :

- Help your peers succeed: Offer valuable support to students with disabilities and play a key role in their academic journey
- Develop your skills: Strengthen your technical, interpersonal, and organizational abilities
- Enjoy flexible hours: Fit your involvement around your own schedule
- Highlight your commitment: Add meaningful experience and skills to your résumé

Note-taking :

Type of task : Actively take notes during your classes (lectures and tutorials) on behalf of students with disabilities, ensuring accuracy, clarity, and timely delivery.

Compensation and contract duration :

- You will be paid the equivalent of one hourly minimum wage (SMIC) for every 4 hours of note-taking.
- The contract is for one semester and can be renewed.

Exam Scribing :

Type of task : Assist students with disabilities during exams by reading the questions aloud and/or transcribing their responses as dictated.

Compensation and contract duration : You will be paid one hourly minimum wage (SMIC)

Tutoring :

Type of task : Help students with disabilities better understand course content by reviewing key points, rephrasing complex concepts, and providing clarification when needed.

Compensation : €15.25 gross per hour





Disability, Employment, and Internships

Understanding RQTH (Recognition of Disability Status)

As part of your studies, you will be required to complete internships in companies. To have your disability officially recognized and benefit from workplace accommodations, you must apply for the Recognition of the Status of Disabled Worker (RQTH). This request must be made through the Departmental House for Disabled Persons (MDPH).

The MDPH provides access to rights and services, and supports people with disabilities and their families in administrative procedures. Please note: There is one MDPH in each French department. You must contact the MDPH in the department where your main residence is located.

RQTH and Crous Scholarships: Since the start of the 2023 academic year, students with RQTH status are eligible for 4 additional support points to improve access to need-based (social criteria) scholarships.

You can submit your RQTH certificate when applying for a scholarship or upload it to your student social file during the academic year.

MDPH Essonne (91) :
93 Rue Henri Rochefort,
91000 Évry
☎ 01 60 76 11 00
✉ mdphe@cd-essonne.fr

Find the MDPH offices in other departments:
<https://mdphenligne.cnsa.fr/>

Informations



Apprenticeship and Disability

In each Training and Apprenticeship Center (CFA), a dedicated disability advisor is available to answer your questions and support you throughout your academic journey. Study and exam accommodations are implemented based on your specific needs. This service is available to all apprentices with RQTH status enrolled at Université Paris-Saclay, regardless of their field of study.

Informations



Disability Coordinator
☎ 01 69 15 39 57
✉ handicap.cfadftlv@universite-paris-saclay.fr

Convention « Atouts pour Tous »

This regional collaborative initiative aims to build strong bridges between young people with disabilities and the professional world, relying on a solid network of committed partners (Cap Emploi, France Travail, DRIEETS, etc.). It offers personalized support tailored to individual needs and career goals.

Internships, Apprenticeship Opportunities, and Job Searching





Useful Informations



University Library

Need to go to the library? Need specific accommodations related to your disability?

Contact Margot Thuilleaux

Digital Accessibility and Disability Contact Person

✉ margot.thuilleaux@universite-paris-saclay.fr

i Informations



“Fédé 100% Handinamique” Agreement

A national movement led by young people with disabilities, for young people with disabilities.

It promotes inclusion throughout education and career pathways through a network of peer support, student associations, and various initiatives such as mentorship programs, student scholarships, “Handicafé” networking events, and “Hand’immersion” work experience opportunities.

i Informations



“Atypie-Friendly” Program

University Paris-Saclay is a signatory of the Atypie -Friendly Charter. This national program aims to improve the inclusion of neurodiverse individuals in higher education. Specifically, it supports people with neurodevelopmental disorders (NDD), including those with Autism Spectrum Disorder (ASD), Attention Deficit Hyperactivity Disorder (ADHD), and/or learning disabilities such as dyslexia or dyscalculia.

Atypie-Friendly offers online training resources via e-campus (the University’s Moodle platform), as well as social meet-ups (atypical cafés, social skills groups) and the opportunity to book appointments with a neuropsychologist and a CBT psychologist. You can visit us at building 336 in Bures-sur-Yvette.

Atypie-Friendly is a network of over 40 universities across France. Additional resources and webinars are also available online.

Sign up on e-campus to learn more and receive updates about our activities.

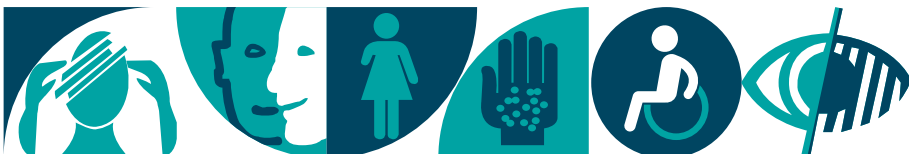
Ghislain REMY
Local coordinator

For any questions, the team can be reached at the following address:

✉ ghislain.remy@universite-paris-saclay.fr

☎ 01 69 15 32 42

i Informations





Find your Disability Contact and/or Advisor

in each university department

JEAN MONNET FACULTY

LAW, ECONOMICS, AND MANAGEMENT

Sandrine PIGE (Administrative)

☎ 01 40 91 18 75

✉ handicap.jean-monnet@universite-paris-saclay.fr

Raphaël BRETT (Professor)

✉ raphael.brett@universite-paris-saclay.fr

Fabrice LE GUEL (Professor)

✉ fabrice.le-guel@universite-paris-saclay.fr

FACULTY OF MEDICINE

Simon PATIGNY (Administrative)

☎ 01 49 59 66 07

✉ simon.patigny@universite-paris-saclay.fr

Gérard TACHDJIAN (Professor)

✉ gerard.tachdjian@universite-paris-saclay.fr

NURSING TRAINING INSTITUTE (IFSI)

🌐 <https://www.universite-paris-saclay.fr/vie-de-campus/handicap/contacts-handicap>

PAUL GUINOT INSTITUTE

Grégory GUYOT (Professor)

✉ ifmk@guinot.asso.fr

ENKRE

Cécile THIRION

✉ enkre.thirion@gmail.com

FACULTY OF PHARMACY

Samuel COSTANTIN (Administrative)

✉ samuel.costantin@universite-paris-saclay.fr

Catherine DUBERNET (Professor)

✉ catherine.dubernet@universite-paris-saclay.fr

FACULTY OF SPORTS SCIENCES

Josette GEAIRON (Administrative)

✉ josette.geairon@universite-paris-saclay.fr

Charlotte DUTHU (Professor)

✉ charlotte.duthu@universite-paris-saclay.fr

FACULTY OF SCIENCES

Claire PFINDER (Administrative)

✉ claire.pfinder@universite-paris-saclay.fr

Sébastien GUILABERT (Administrative)

✉ sebastien.guilabert@universite-paris-saclay.fr

VILLEBON CHARPACK INSTITUTE

Martine THOMAS (Professor)

✉ martine.thomas@universite-paris-saclay.fr

Emilie AMZALLAG (Professor)

✉ emilie.amzallag@universite-paris-saclay.fr

IUT CACHAN

Anne TUBIANA (Nurse)

✉ anne.tubiana@universite-paris-saclay.fr

Sylvie DROUIN (Professor)

✉ sylvie.drouin@universite-paris-saclay.fr

Ghislain REMY (Professor)

✉ ghislain.remy@universite-paris-saclay.fr

IUT D'ORSAY

Caroline BEKAERT (Infirmière)

✉ caroline.bekaert@universite-paris-saclay.fr

Hélène BONNEAU (Professor)

✉ handi.iut-orsay@universite-paris-saclay.fr

Françoise KASPAR (Administrative)

✉ francoise.kaspar@universite-paris-saclay.fr

IUT DE SCEAUX

Delphine MARTIN (Administrative)

✉ delphine.martin2@universite-paris-saclay.fr

Alberto GUINDA-VILLANUEVA (Professor)

✉ alberto.guinda-villanueva@universite-paris-saclay.fr

POLYTECH PARIS-SACLAY

Alexandra STABE

✉ alexandra.stabe@universite-paris-saclay.fr

Guillaume DUPUIS

✉ guillaume.dupuis@universite-paris-saclay.fr



FOR ALL OTHER REQUESTS

Diversity & Disability Department

☎ 01 69 15 61 59

✉ handicap.etudiant@universite-paris-saclay.fr

