

UE5 C : Sciences Analytiques – Techniques spectrale



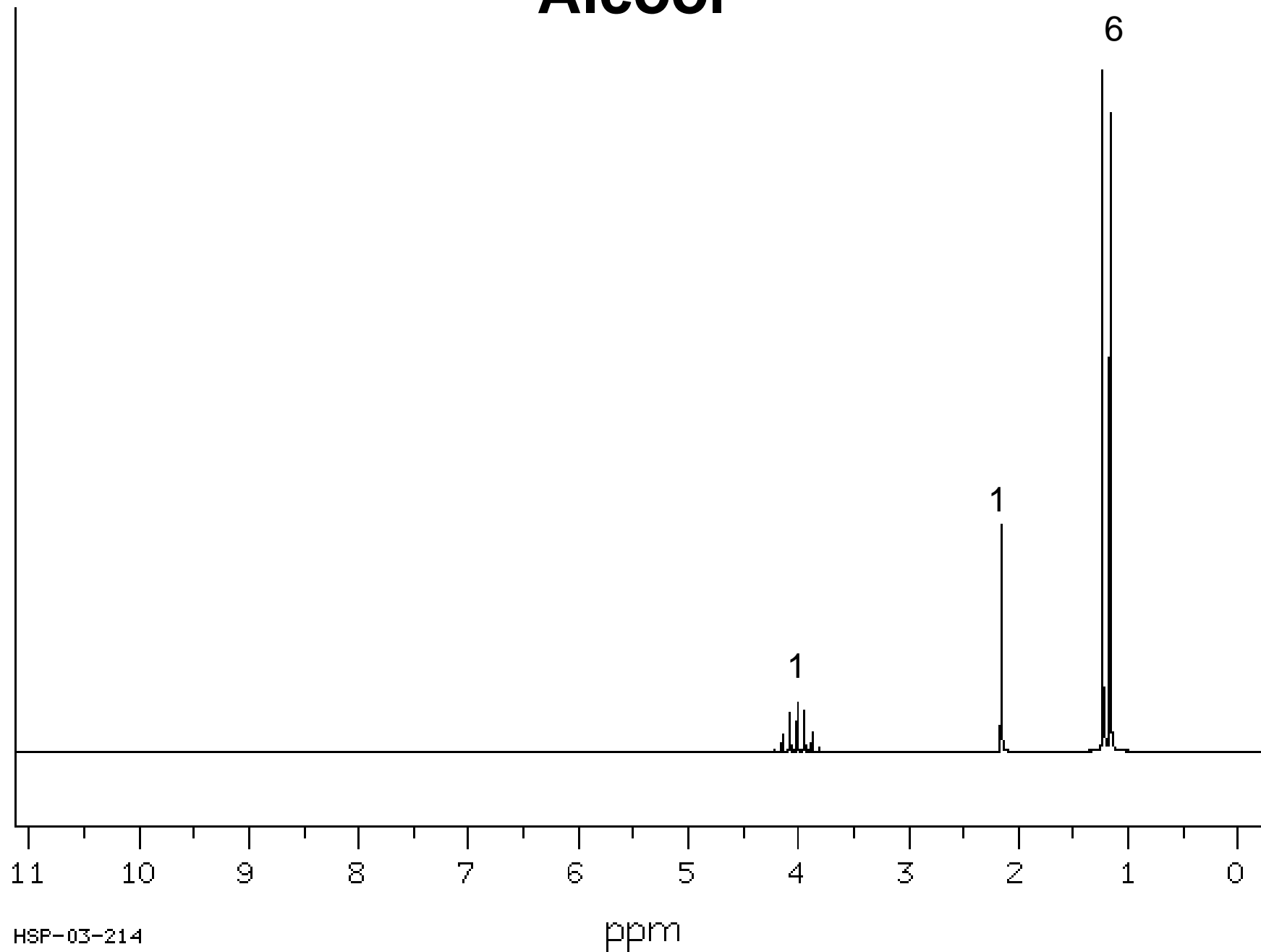
Pr. A. TFAYLI

Enseignements dirigés

Mmes C. LAUGEL, I. LE POTIER, D. LIBONG, R. MICHAEL-JUBELI, S. TFAILI, T. TRAN
MAIGNAN, J. ZHOU

Alcool

Ex1: C₃H₈O

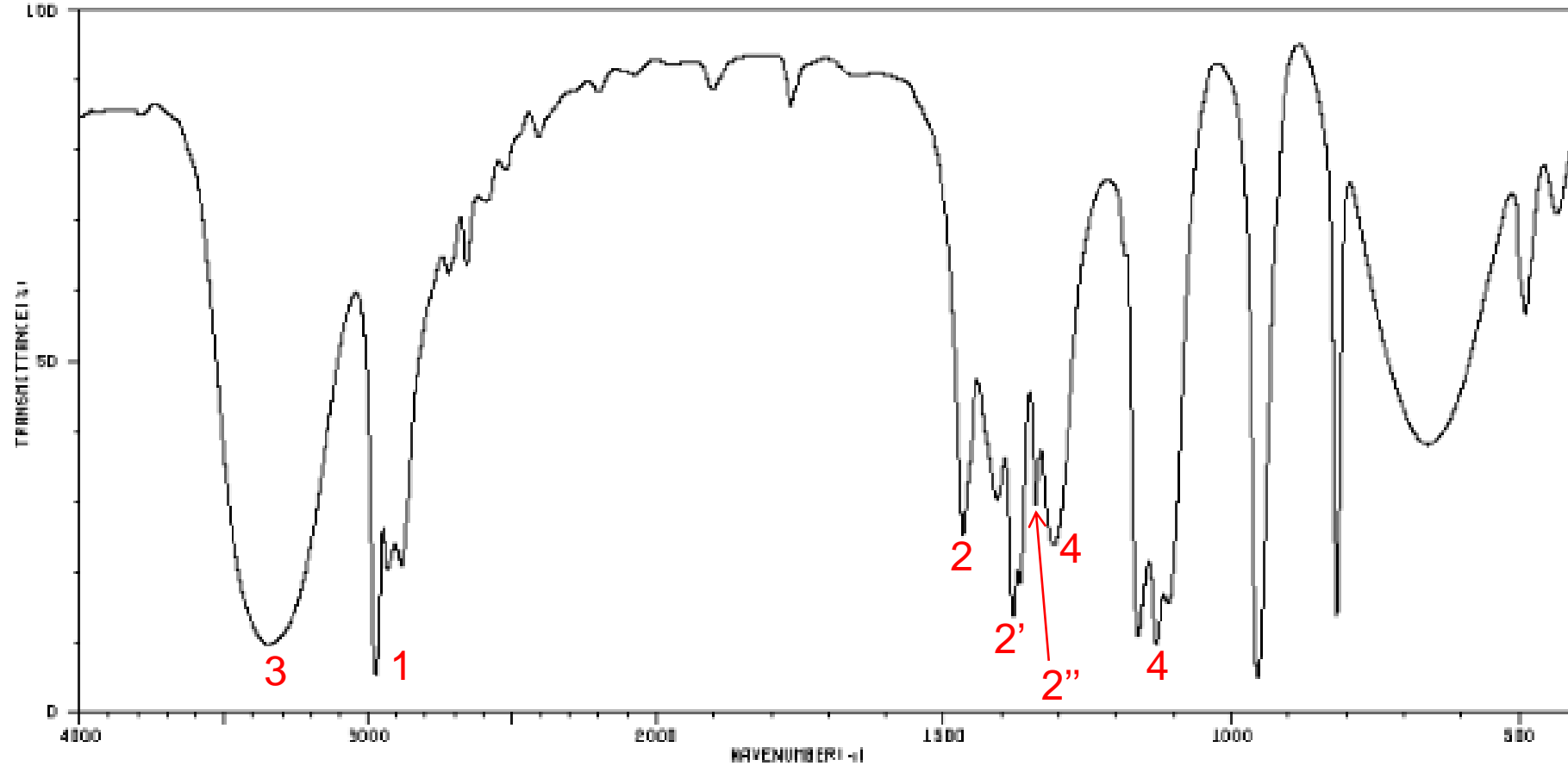


HSP-03-214

ppm

Alcool

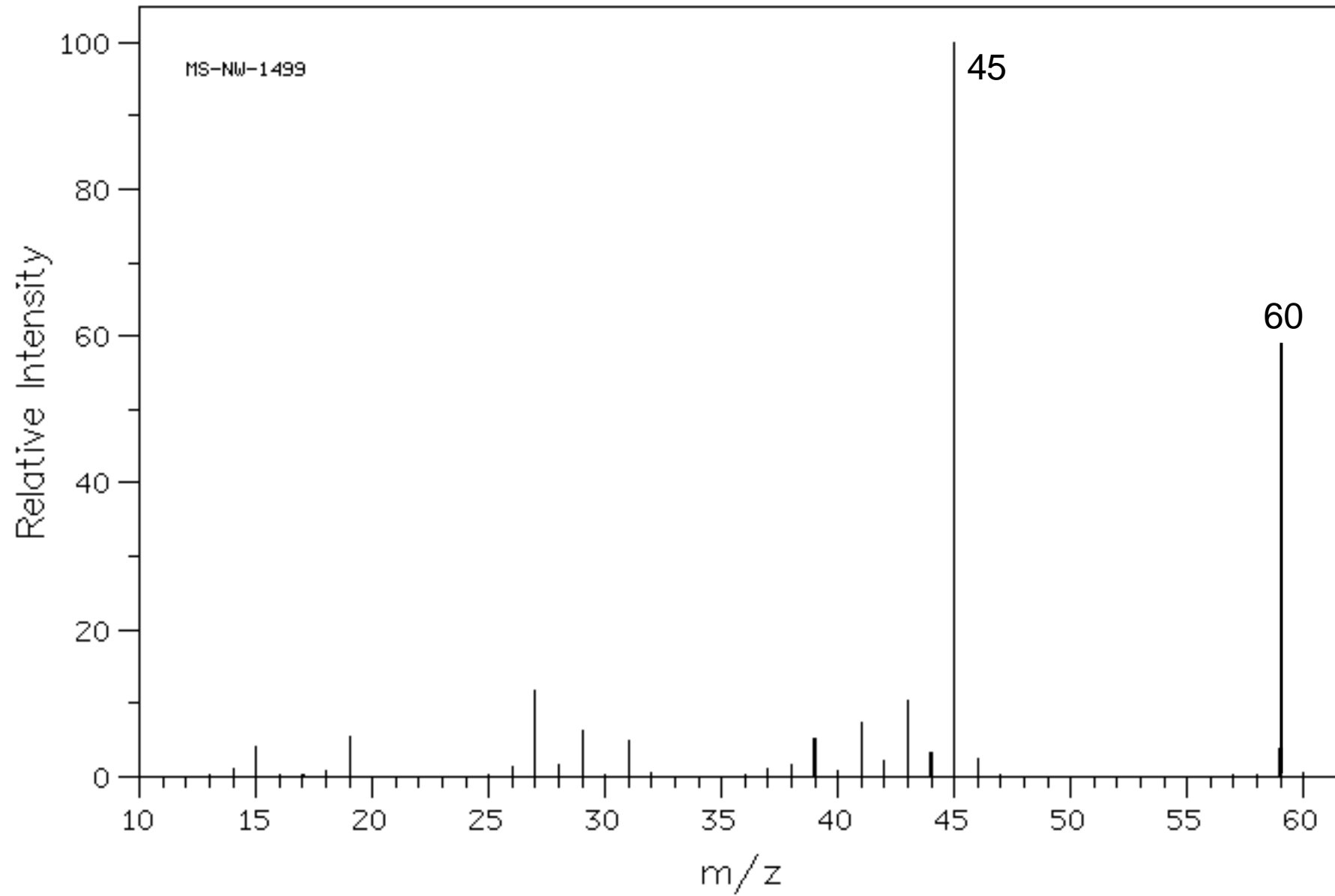
Ex1: C_3H_8O



1: 2975-2950 2885-2860 2900-2880	2: 1470-1435 2': 1385-1380 1370-1365 2'': 1340	3: 3550-3450 ou 3400-3230 4: 1120-1030 1350-1260
--	---	--

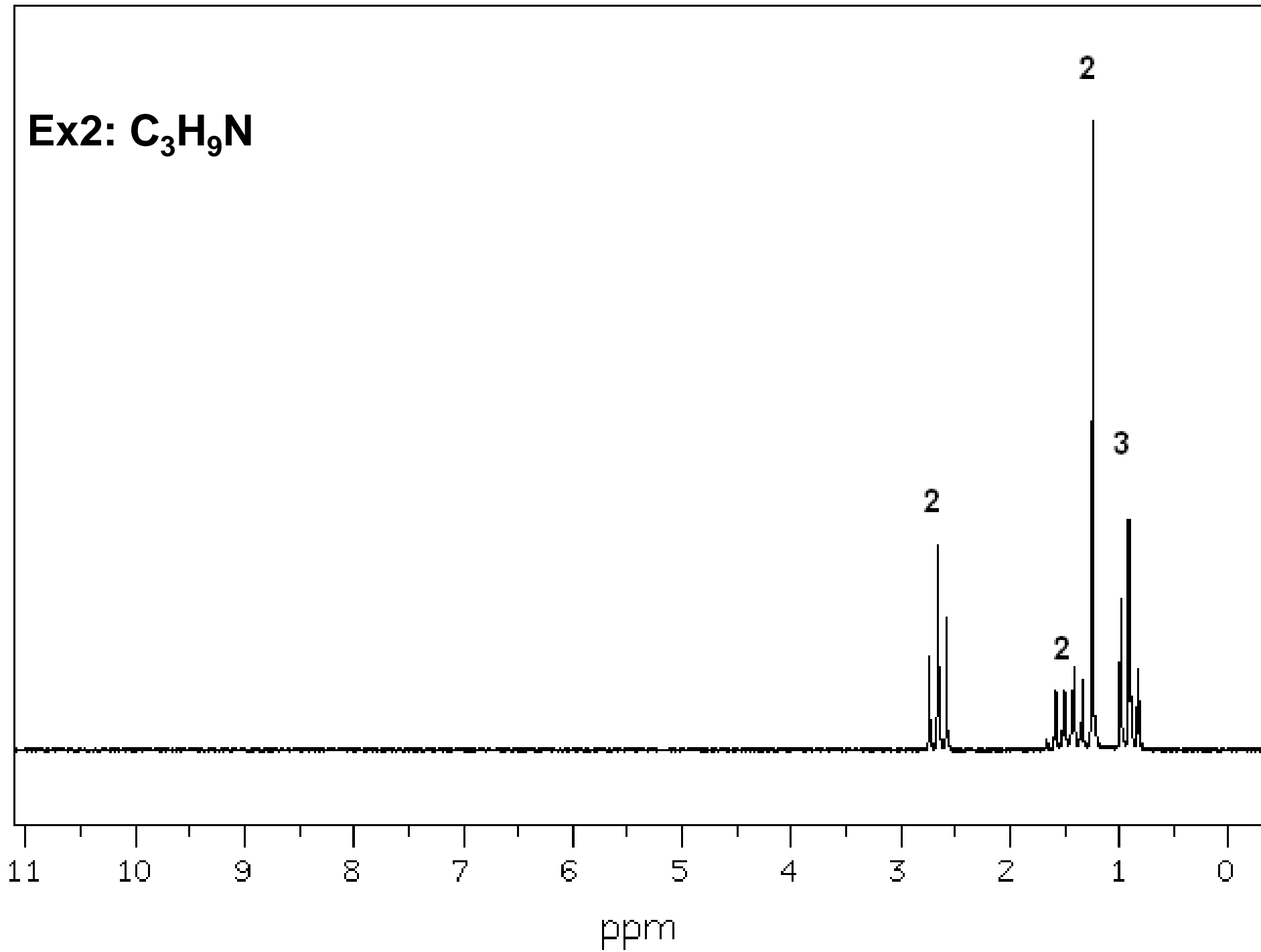
Alcool

Ex1: C₃H₈O



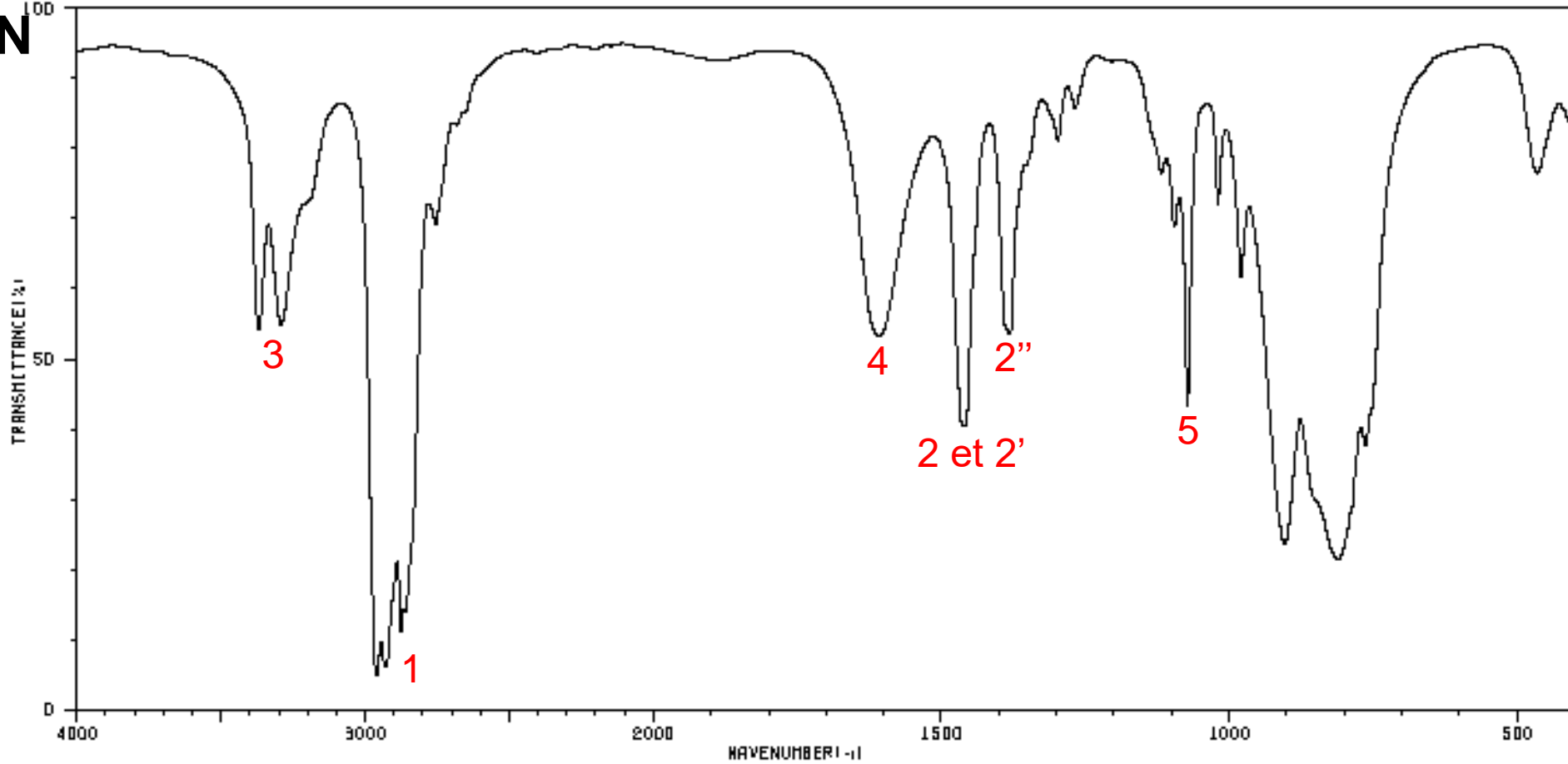
Amine

Ex2: C₃H₉N



Amine

Ex2: C₃H₉N¹⁰⁰



1: 2975-2950
2885-2860

2940-2915
2870-2845

2: 1470-1435

2': 1480-1440

2'': 1385-1370

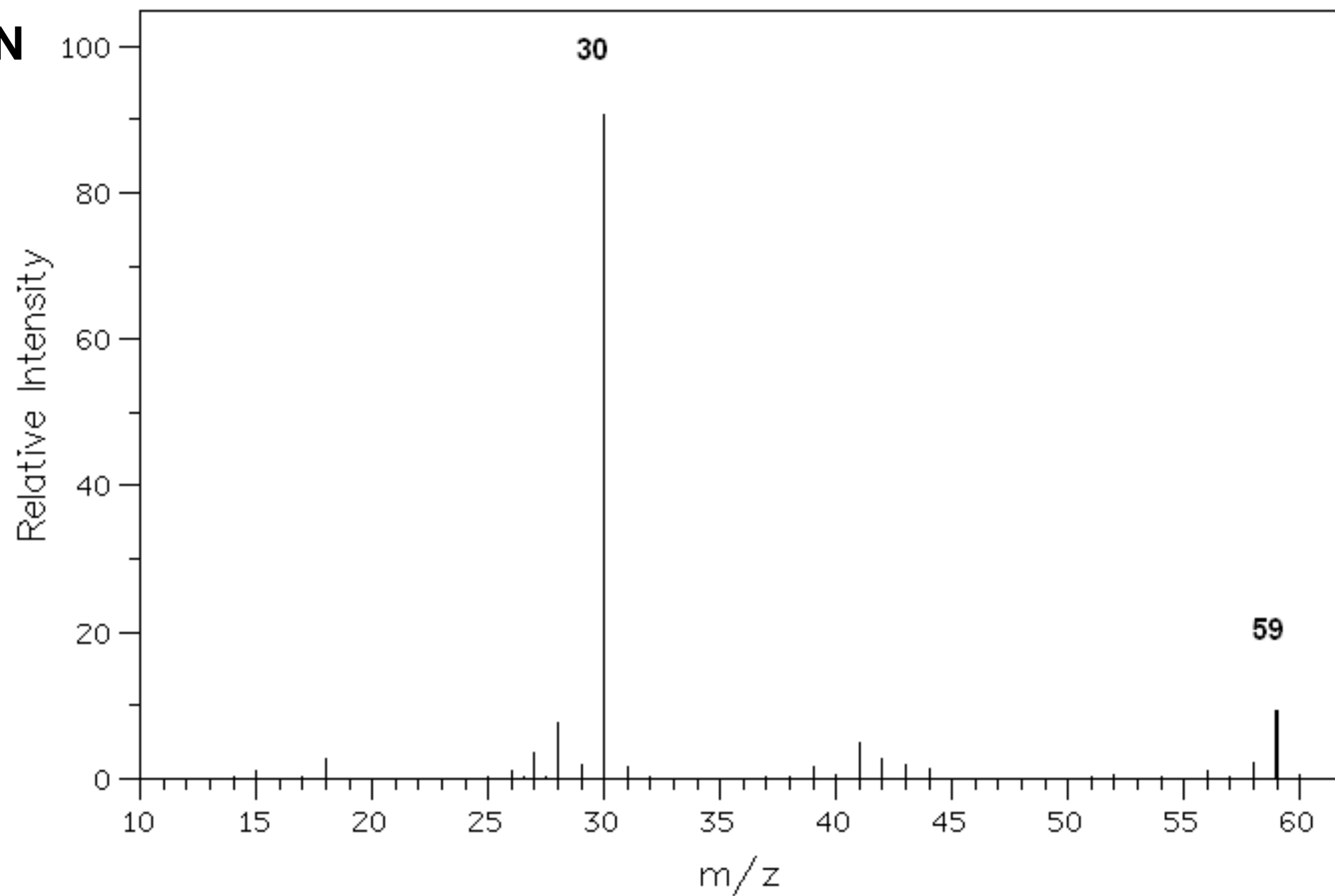
3: 3500-3300
2 bandes

4: 1650-1580

5: 1220-1020

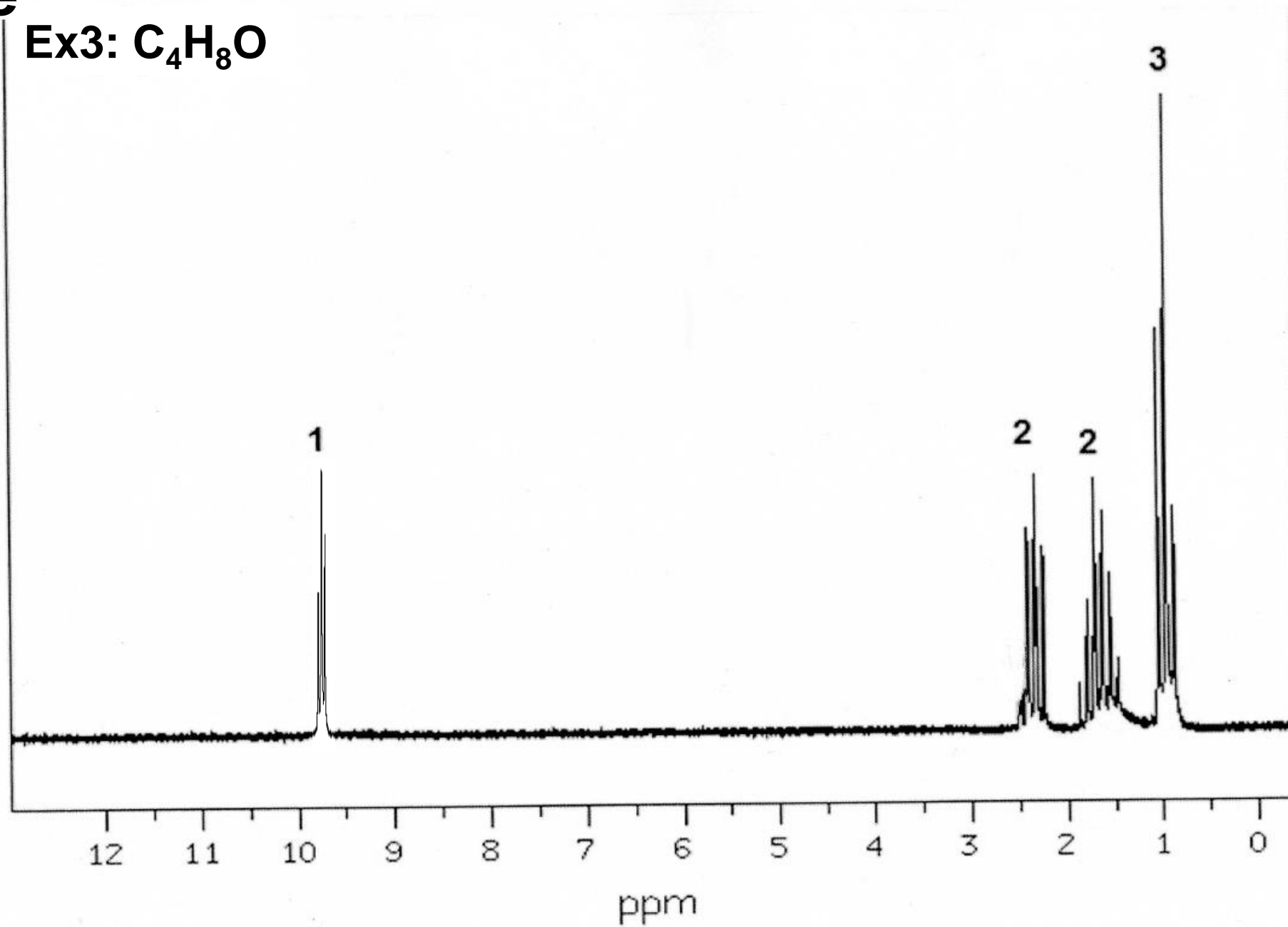
Amine

Ex2: C_3H_9N



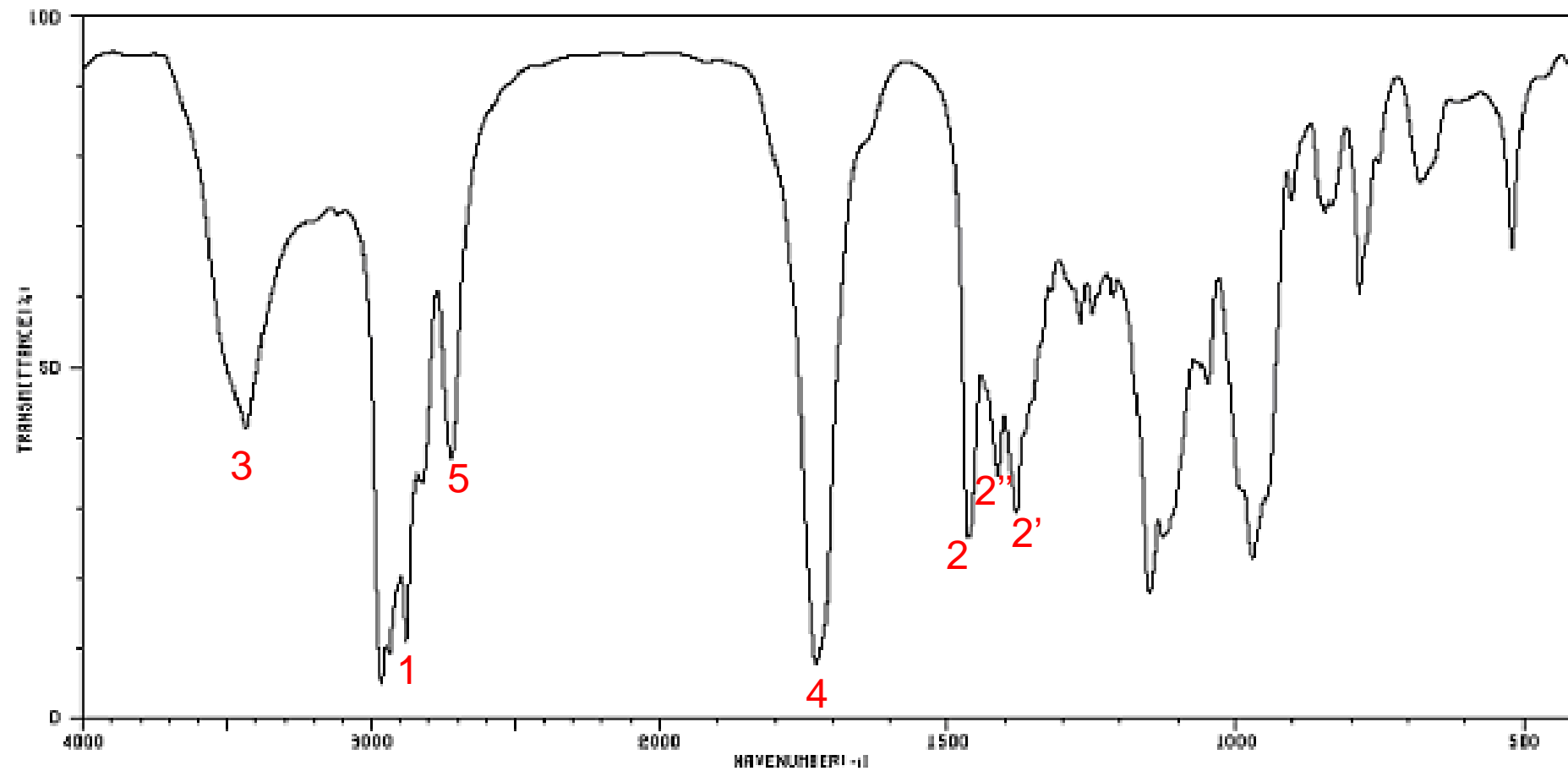
Aldéhyde

Ex3: C₄H₈O



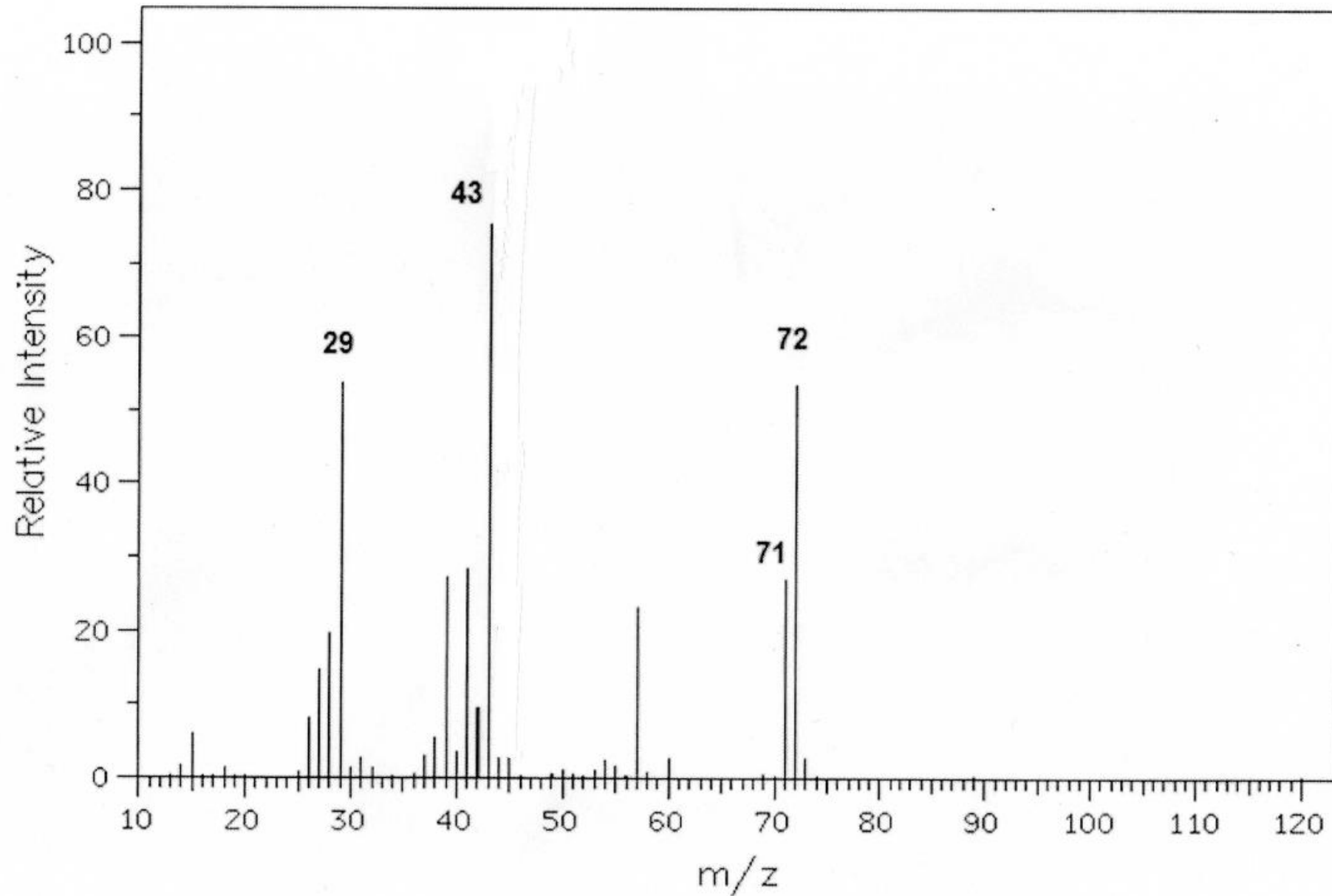
Aldéhyde

Ex3: C₄H₈O

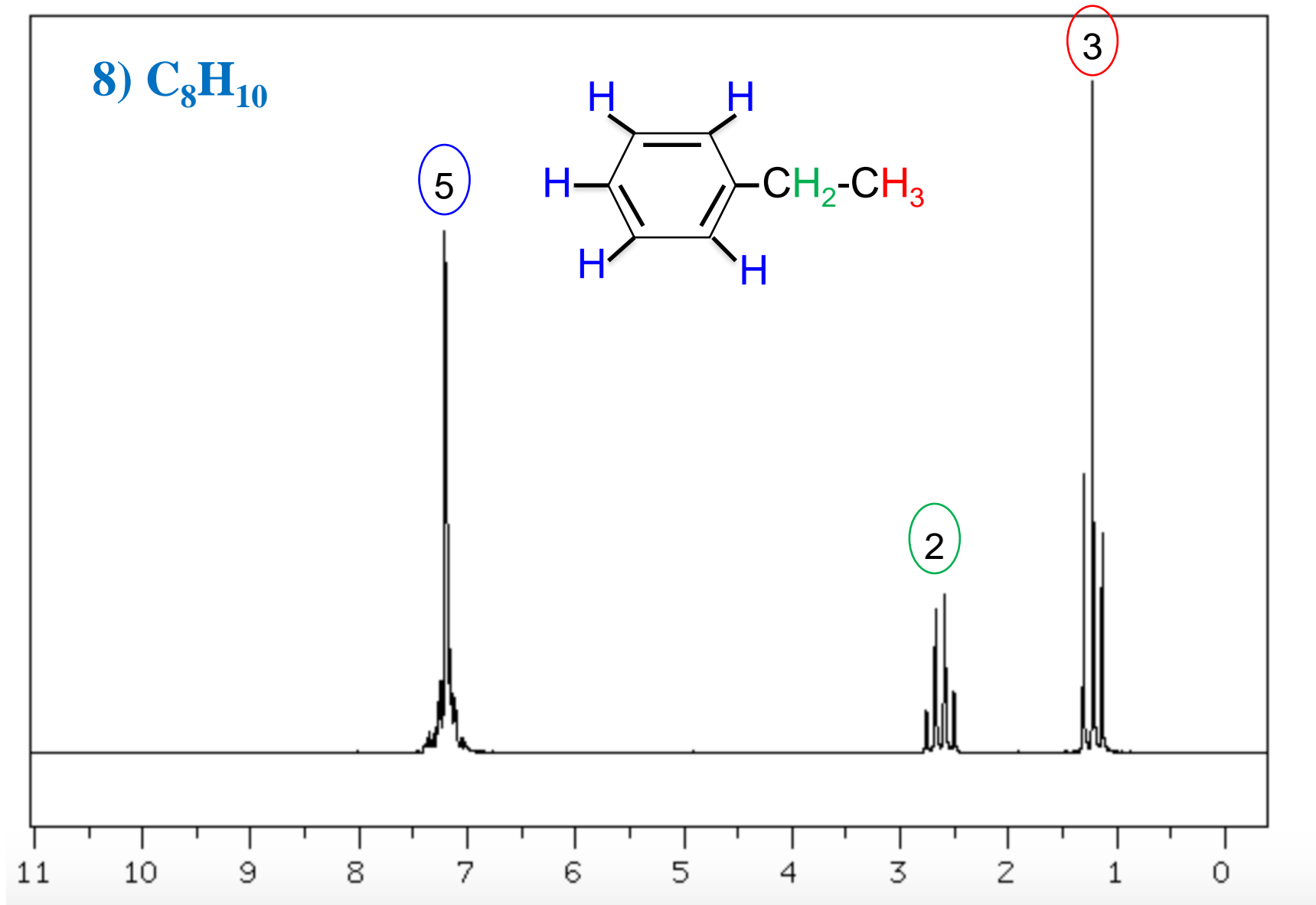


1: 2975-2950 2885-2860	2: 1470-1435 2'': 1480-1440 2': 1385-1370	3: 3400 4: 1740-1720 5: 2880-2650
---------------------------	---	---

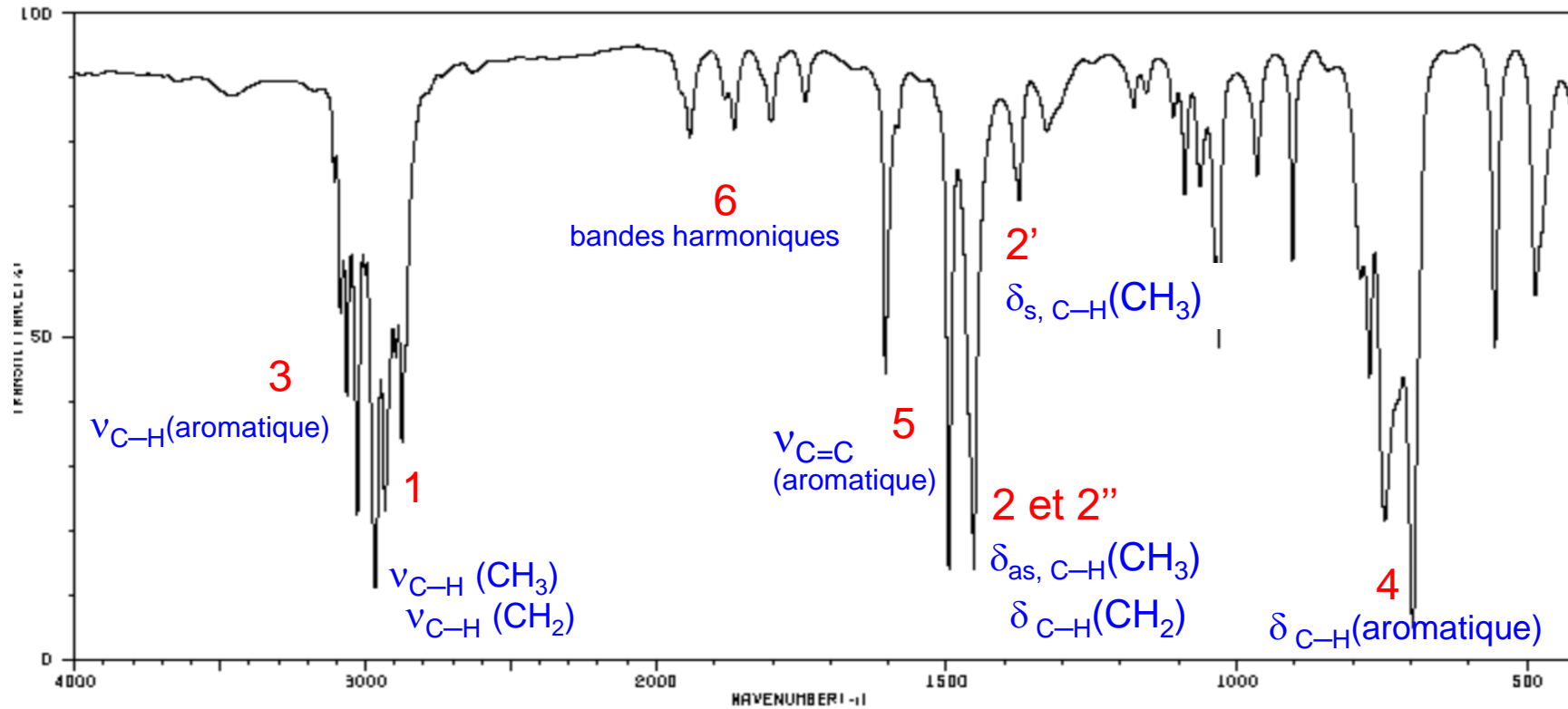
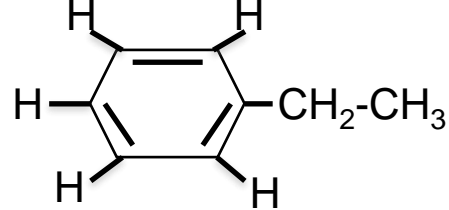
Aldéhyde Ex3: C₄H₈O



Composés aromatiques



8) C₈H₁₀



1: 2975-2950 cm⁻¹
2885-2860 cm⁻¹

2940-2915 cm⁻¹
2870-2845 cm⁻¹

2: 1470-1435 cm⁻¹

2': 1385-1370 cm⁻¹

2'': 1480-1440 cm⁻¹

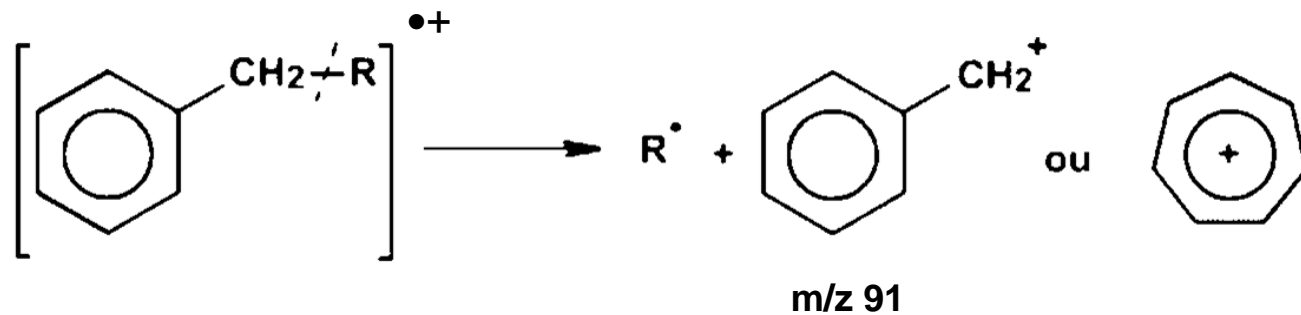
3: 3080-3030 cm⁻¹

4: 770-730 cm⁻¹

5: 1625-1440 cm⁻¹

6: 2000-1600 cm⁻¹
monosubstitution
4 bandes

La fragmentation des composés aromatiques monosubstitués par des alkyles



Le clivage est d'abord au niveau de la liaison en β par rapport au cycle aromatique.

8) C₈H₁₀

