



Redesigning Enzymes for Biocatalysis: Exploiting Structural Understanding for Improved Selectivity

Yaoyu Ding, Gustavo Perez-Ortiz, Jessica Peate and Sarah M. Barry*

Department of Chemistry, Faculty of Natural, Mathematical and Engineering Sciences, King's College London, London, United Kingdom

The discovery of new enzymes, alongside the push to make chemical processes more sustainable, has resulted in increased industrial interest in the use of biocatalytic processes to produce high-value and chiral precursor chemicals. Huge strides in protein engineering methodology and *in silico* tools have facilitated significant progress in the discovery and production of enzymes for biocatalytic processes. However, there are significant gaps in our knowledge of the relationship between enzyme structure and function. This has demonstrated the need for improved computational methods to model mechanisms and understand structure dynamics. Here, we explore efforts to rationally modify enzymes toward changing aspects of their catalyzed chemistry. We highlight examples of enzymes where links between enzyme function and structure have been made, thus enabling rational changes to the enzyme structure to give predictable chemical outcomes. We look at future directions the field could take and the technologies that will enable it.

Keywords: biocatalysis, enzymes, protein engineering, structural biology, regioselectivity, stereoselectivity, rational design

1 INTRODUCTION

Enzymes are of interest in chemical synthesis as they catalyze a wide array of chemical transformations (e.g., C–H bond activation, cyclization, and stereospecific reduction) which are extremely challenging, using even modern small-molecule catalysis. Furthermore, enzymes carry out these reactions often with unrivaled chemo-, regio-, and stereoselectivity and under mild conditions. The drive to make synthesis more sustainable has led to a rapid expansion in the use of enzymes in industry and is facilitated by improved availability of reliable off-the-shelf biocatalysts and screening methodologies (Hughes and Lewis, 2018). Several factors have influenced the availability of biocatalysts. The vast increase in sequence data has allowed genome mining for enzymes with specific domains which give rise to known functionalities, e.g., alcohol dehydrogenases, cytochrome P450s, etc. Improvements in cloning technology and construct optimization, as well as an array of expression strains and solubility tags, have given protein scientists an impressive toolbox to optimize the production of previously intractable proteins. Additionally, cofactor recycling systems have made biocatalytic reactions that were unviable due to expensive enzyme cofactors, e.g., S-adenosylmethionine and NADPH consumed in reactions, now more economical. However, going forward, to expand biocatalysis for sustainable chemical synthesis, methods and understanding are needed to harness enzymes with desired functionality to replace and complement existing synthetic strategies. This can be accomplished through a combination of

OPEN ACCESS

Edited by:

Alex Jones,
National Physical Laboratory,
United Kingdom

Reviewed by:

Xiang Sheng,
Tianjin Institute of Industrial
Biotechnology (CAS), China
Lujia Zhang,
East China Normal University, China

*Correspondence:

Sarah M. Barry
sarah.barry@kcl.ac.uk

Specialty section:

This article was submitted to
Structural Biology,
a section of the journal
Frontiers in Molecular Biosciences

Received: 30 March 2022

Accepted: 08 June 2022

Published: 22 July 2022

Citation:

Ding Y, Perez-Ortiz G, Peate J and
Barry SM (2022) Redesigning Enzymes
for Biocatalysis: Exploiting Structural
Understanding for
Improved Selectivity.
Front. Mol. Biosci. 9:908285.
doi: 10.3389/fmolb.2022.908285

enzyme discovery and protein engineering. In fact, future developments in protein engineering are likely to have the most profound impact on industrial biocatalysis (Bell et al., 2021).

Engineering enzymes can be carried out via rational design, e.g., targeting specific domains, conserved motifs, creating fusion proteins, or via non-rational methods such as directed evolution (Arnold, 2018) (Yang et al., 2019) (Ali et al., 2020) (Lovell et al., 2022). Directed evolution strategies have already been successfully applied to the industrial production of high-value molecules, for example, the use of a transaminase to produce sitagliptin by Merck and Codexis (Savile et al., 2010). Transaminases are pyridoxyl phosphate-dependent enzymes that utilize an aldehyde or ketone, and an amine to catalyze the chemical equivalent of a stereospecific reductive amination. This is an increasingly important method to make chiral amines in industrial biocatalysis (Kelly et al., 2020). To introduce a key chiral amine in sitagliptin the transaminase was subjected to directed evolution. The resulting engineered enzyme contains five mutations around the active site to accommodate the large trifluorophenyl group on pro-sitagliptin (Savile et al., 2010).

However, directed evolution strategies, while extremely powerful, require high throughput methods to screen thousands of mutants and usually an operationally simple colorimetric assay, to select positive hits (Wang et al., 2021). These assays can be difficult to optimize and are usually designed to detect only the desired outcome. This could miss unpredicted, but useful changes in catalyzed chemistry (Hubert and Barry, 2016). Semi-rational design requires an enzyme structure or homology model, enabling the identification of key enzyme residues or motifs, and employs various strategies such as site saturation mutagenesis, Combinatorial Active-Site Saturation Test (CAST), and Iterative Saturation Mutagenesis (ISM) (Wang et al., 2017). These strategies can also generate hundreds of mutants and screening is a common bottleneck. Rational engineering generally involves targeting a limited number of residues in a binding pocket, consensus sequence, or motif. Thus, it produces fewer mutants that can be screened using low-medium throughput methods such as High performance liquid chromatography (HPLC). Chromatographic screening methods gather more information, such as unexpected products and the regio and stereoselectivity of the reaction, which is of vital importance in synthesis. But, while high throughput HPLC methodology has improved, it is comparatively expensive. However, rational mutation relies on significant knowledge of the structure and mechanism of the enzyme.

Here, we discuss rational or semi-rational protein engineering approaches to alter aspects of enzyme chemistry with a focus on improving stereo- and/or regioselectivity. We briefly discuss expanding substrate tolerance. These approaches help to provide insight into enzyme structure-activity relationships and highlight gaps in our understanding. The following is not intended to be an exhaustive review. We focus on approaches which are guided by, or can be explained through, structural and mechanistic understanding of the enzyme. We have also selected examples to illustrate each approach, focusing on enzymes

already used in industrial contexts or transformations of particular interest in organic synthesis (Winkler et al., 2021) (Marshall et al., 2021).

2 RATIONAL MUTAGENESIS

Stereoselective and regioselective reactions are vital for the successful chemical synthesis of complex molecules. However, many stereoselective reactions are catalyzed by heavy metal-containing small-molecule catalysts which can be toxic. The benefit of small-molecule catalysts is that they can be designed to produce one or the other enantiomer selectively.

Enzymes can carry out transformations under mild conditions avoiding the need for heavy metals and solvents, and thus offer a path to more sustainable chemistry. Most enzymes also afford a single stereo or regioisomer. Should this not be the desired isomer of a given chemical target, a complementary enzyme may need to be identified. In other cases, enzymes produce mixtures of products which then require time-consuming separation. Both problems could be solved by a bioinformatics approach, i.e., searching genetics databases for similar enzymes, followed by extensive production and screening of candidate enzymes. This is time-consuming and success is not guaranteed. For many enzyme families, predicting the substrate and chemistry based on sequence or homology model alone is still difficult. For this reason, many efforts have been made to develop selective biocatalysts via rational protein engineering.

Rational mutagenesis can involve strategies of differing complexity. Sequence alignment and sufficient knowledge of conserved motifs can often provide sufficient guidance. However, for enzymes that undergo substantial conformational change on substrate binding, crystal structure data, homology modelling, and substrate docking studies may be required to produce a more detailed picture. Detailed information about the enzyme mechanism could also be necessary. Here we discuss several rational engineering strategies to alter enzyme reaction outcomes. They include, mutating residues directly involved in substrate binding interactions to alter substrate orientation, change steric crowding in the active site to promote altered regio- and stereoselectivity and improved enzyme promiscuity, and also mutating residues directly involved in catalysis.

2.1 Analysis of Protein Sequence and Structure to Aid Protein Engineering

Structurally characterized enzymes, especially with substrate and/or cofactors bound, offer the best opportunities for rational design. However, identifying where mutations should be introduced, is enzyme or enzyme family dependent, as the structural drivers of stereo and regioselectivity will differ. Furthermore, many enzymes cannot be structurally characterized in the presence of substrate because the enzyme turns over the substrate and appropriate inert substrate analogs may not be available. Key information about substrate orientation, active site interactions, and conformational change resulting from ligand binding will

thus be missing. Thus, computationally docking substrates into crystal structures or even homology models can be a powerful tool enabling rational protein engineering. For example, the plant cytochrome P450 (CYP72A63) oxidizes the terpene 11-oxo- β -amyrin producing a mixture of oxidized products. The reaction occurs at a single carbon and the enzyme sequentially oxidizes the carbon in a series of two-electron oxidations from C-H to alcohol, aldehyde, and finally a carboxylic acid (Sun et al., 2020). Cytochrome P450s are heme-dependent enzymes that utilize molecular oxygen to facilitate a wide variety of oxidative transformations on a vast array of substrates (Greule et al., 2018). Despite functional and primary sequence diversity, their tertiary structures are highly conserved and contain several key motifs which significantly influence catalysis (Poulos, 2014). Docking studies of CYP72A63 revealed just three residues responsible for chemo- and regio-selectivity (Sun et al., 2020). It appeared that the methyl group of T338, in a conserved motif located in the I-helix above the heme, reduced the enzyme's affinity for the partially oxidized intermediates (alcohol and aldehyde). This resulted in intermediate release and prevented further oxidation to the acid. The T338S mutant decreased hydrophobicity in the active site resulting in retention of the intermediate and thus production of the carboxylic acid, glycyrrhetic acid. Furthermore, a single mutation L398I rotated 11-oxo- β -amyrin and relocated C-29 close to the heme-Fe center (Sun et al., 2020). Cytochrome P450s are of growing interest as biocatalysts due to their potential as C-H bond activation catalysts as illustrated in the example above (Zhang et al., 2019). The ability to activate inert C-H bonds selectively, even on complex substrates, is considered a holy grail of synthetic chemistry and an important green chemistry target (Arndtsen et al., 1995) (Dalton et al., 2021). There are however still significant gaps in our understanding of the relationship between P450 structure and function.

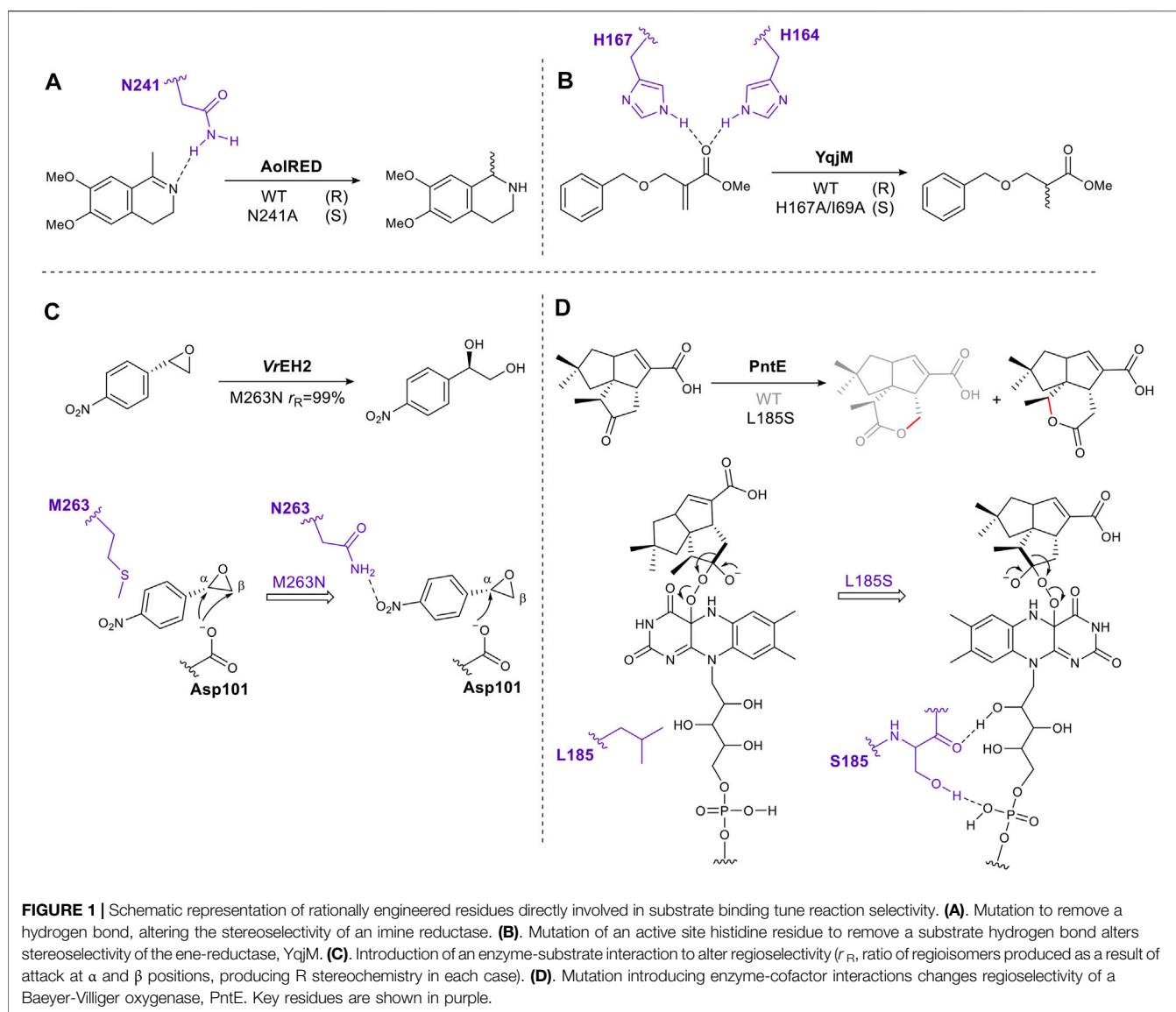
Identifying conserved residues or motifs in an enzyme is also enabled by easy access to the large bank of sequence data and bioinformatic tools. This information is vital for "preengineering". For example, in an imine reductase G-36 (IRED), N121 and S260 were identified from the docking model as targets to enable expansion of the binding cavity. Additional target residues were identified from a sequence alignment of 70 IREDs. Thus, just seven variants were screened and the catalytic efficiency was improved ten times with a near-perfect stereoselectivity (R, 99% enantiomeric excess (ee)) (Zhang et al., 2022). Equally, in the transaminase from *Vibrio fluvialis* (ATA-Vfl), a single amino acid mutation, L56V, improved selectivity increasing diastereomeric excess (de) from 14 to 89% compared to WT (Skalden et al., 2015). First, the residue Leu56 was identified from the docking model. The distribution of residues at this position in amine transaminases (ATAs) was analyzed using the 3DM database, a powerful tool for multiple sequence alignment (Kuipers et al., 2010). Only six amino acids were selected to develop a small mutant library (Skalden et al., 2015). Furthermore, even without a docking model, sequence alignments identify key function determining residues. Sclareol synthase from *Salvia sclarea* (SsSS), a class I

terpene synthase, catalyzes hydroxyl group insertion. Three key sites (N431, S433, and T436) were selected from sequence alignment with other family members. Mutating these sites changed the water molecule nucleophile position in the active site, allowing it to attack the double bond from differing directions, selectively producing different stereoisomers (Jia et al., 2018).

2.2 Mutating Residues Involved in Direct Enzyme–Substrate Interactions

Through inspection of the enzyme–substrate complex or substrate docking model, amino acids which interact directly with a substrate can be identified. Mutating these residues can eliminate or reduce affinity for a substrate by removing hydrogen bonds, electrostatic or hydrophobic interactions. However, if done carefully this approach can succeed in shifting the orientation of the substrate in the active site, thus altering the direction of reaction (e.g., hydride addition) or on which atom the reaction occurs, giving different stereoselectivity or regioselectivity respectively. For example, after examining the crystal structure of the imine reductase (IRED) AoIRED, an N241A mutant was created to interrupt the interaction between the imine nitrogen atom and Asn241, moving the imine toward NADPH, thus changing the enantioselectivity (Aleku et al., 2016) (Figure 1A). In the flavin-dependent enzyme, YqjM, from the OYE family, two histidines act as hydrogen bond donors for the carbonyl oxygen of the α , β -unsaturated ester. Disrupting this interaction by mutating His167 to Ala, allowed the substrate to rotate and switched the stereochemistry of the product (Rüthlein et al., 2015) (Figure 1B).

Conversely, introducing hydrogen bonds through single amino acid mutagenesis can fine-tune substrate-binding positions as exemplified by the epoxide hydrolase VrEH2 (Figure 1C). Asn was introduced at position 263, moving the β carbon away from the catalytic Asp101, thus improving regioselectivity to 99% (Li F.-L. et al., 2018). A final example is PntE, which catalyzes Baeyer-Villiger oxidation in the biosynthesis of pentalenolactone D (Figure 1D). The flavin-dependent Baeyer-Villiger monooxygenases catalyze Baeyer-Villiger oxidations by using molecular oxygen to create a reactive peroxide species. This transformation, ketone to ester, is common in synthetic chemistry. The analogous chemical reaction uses organic peracids, e.g., mCBPA (meta chloroperbenzoic acid) which can be explosive. The oxygen atom is inserted adjacent to the carbonyl group via nucleophilic attack by the peroxide on the carbonyl, followed by rearrangement via a Criegee intermediate to afford the ester or lactone product (Liu et al., 2020). When a single mutation, L185S, was introduced into PntE a complete change in the regioselectivity of the reaction was observed. It was proposed that the serine side chain forms a hydrogen bond with the FAD (flavin adenine dinucleotide)-binding motif, altering the Criegee intermediate conformation, and switching the carbon that migrates (Chen et al., 2016) (Figure 1D).

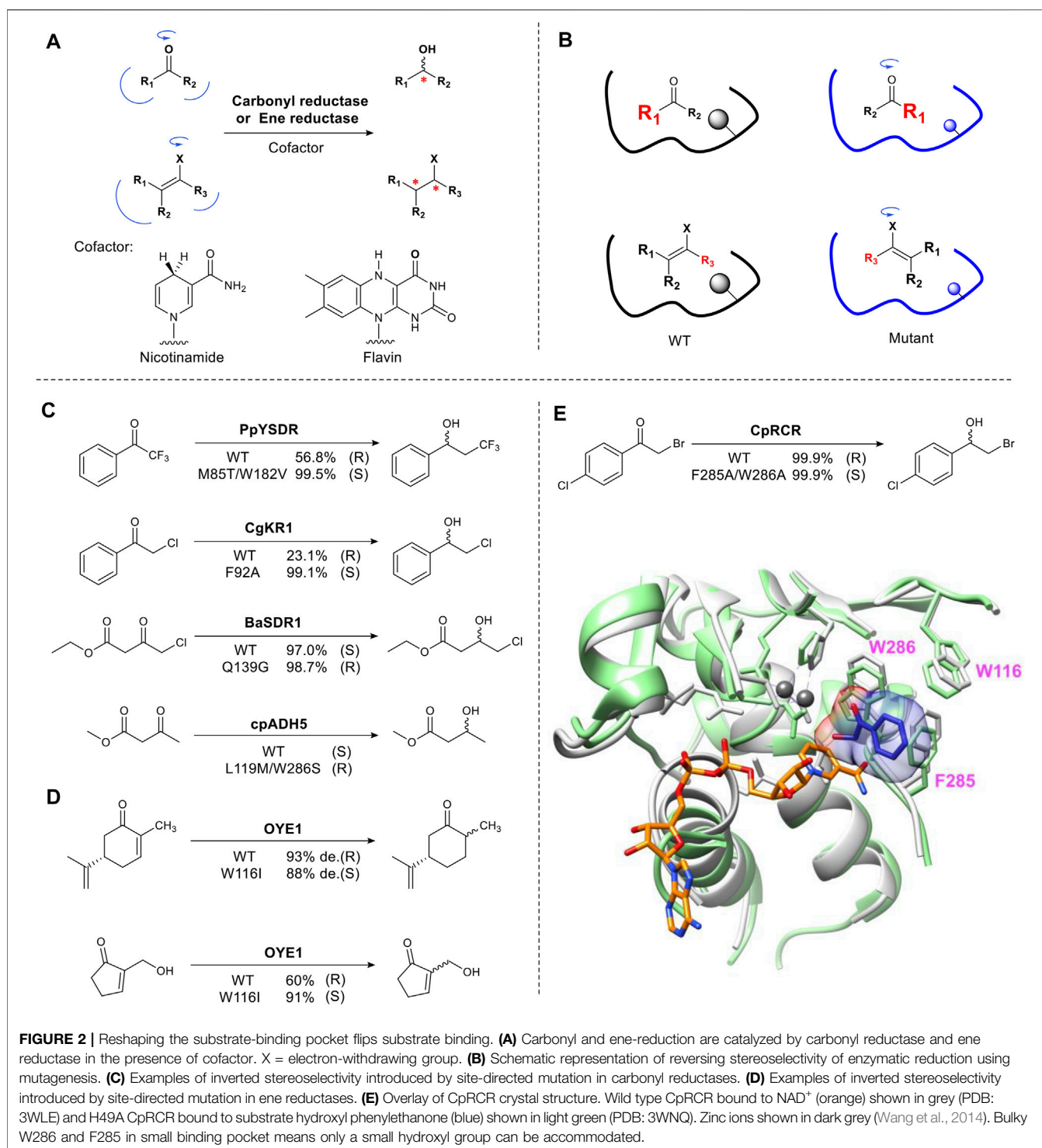


2.3 Rational Mutagenesis to Substrate Binding Pockets to Alter Regio- and Stereoselectivity

Many enzyme families have highly defined, hydrophobic substrate binding sites that lend themselves to rational mutagenesis, both to increase substrate tolerance and change the selectivity of the enzyme. Bulky hydrophobic residues that line an enzyme active site are attractive targets for rational enzyme engineering. Modification of these residues can markedly reshape the substrate-binding pocket, usually creating more space and altering the hydrophobicity. Just enlarging the pocket can give rise to multiple substrate binding orientations which can lead to a loss of selectivity and multiple regio or stereoisomers. Thus, a balance is required between increased space to allow for more promiscuous

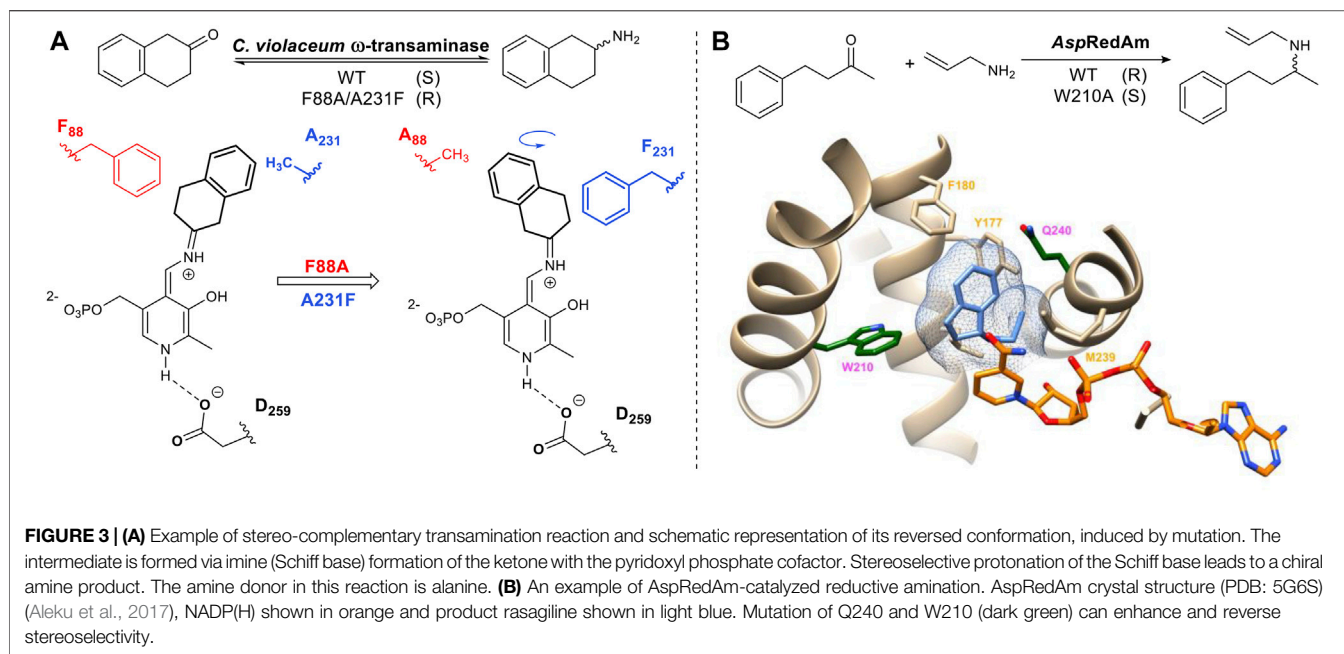
substrate tolerance and ensuring the binding of specific orientations to maintain selectivity.

This approach is exemplified in biocatalyzed stereoselective reduction reactions. Alcohol dehydrogenases and ene-reductases, catalyze the asymmetric reduction of carbonyl groups and activated carbon-carbon double bonds, respectively (Toogood and Scrutton, 2014) (Koesoema et al., 2020). These enzyme families have been studied extensively and are used in industrial biocatalysis (de Gonzalo and Paul, 2021) (Toogood and Scrutton, 2018). The mechanism involves the formation of an sp^3 center from a prochiral sp^2 carbon, creating a new stereocenter (Figure 2A). The enzyme binding pocket contains two sites that selectively bind the groups on either side of the carbonyl carbon in a *pro-S* or *pro-R* orientation, thus ensuring stereoselectivity. The typical approach for the rational redesign of these sites is to replace one or two large residues



(Phe, Trp) located in the small binding pocket and mutate them to a smaller residue (Ala, Gly) resulting in “flipped” substrate binding e.g. from *pro-R* to *pro-S* or vice versa (**Figure 2B**). In practice this results in the hydride approaching the substrate from the opposite face (*Re* or *Si*) of the plane of the carbonyl, thus changing the enantiomer formed. Several alcohol

dehydrogenases (ADHs) have been engineered to change their stereoselectivity including PpYSDR (Li et al., 2016), CgKR1 (Qin et al., 2016), CpRCR (Wang et al., 2014) (Nie et al., 2018), BaSDR1 (Li et al., 2021) and cpADH5 (Ensari et al., 2017) which catalyze asymmetric reduction of various α -halogen-substituted acetophenones and β -ketoesters (**Figures**



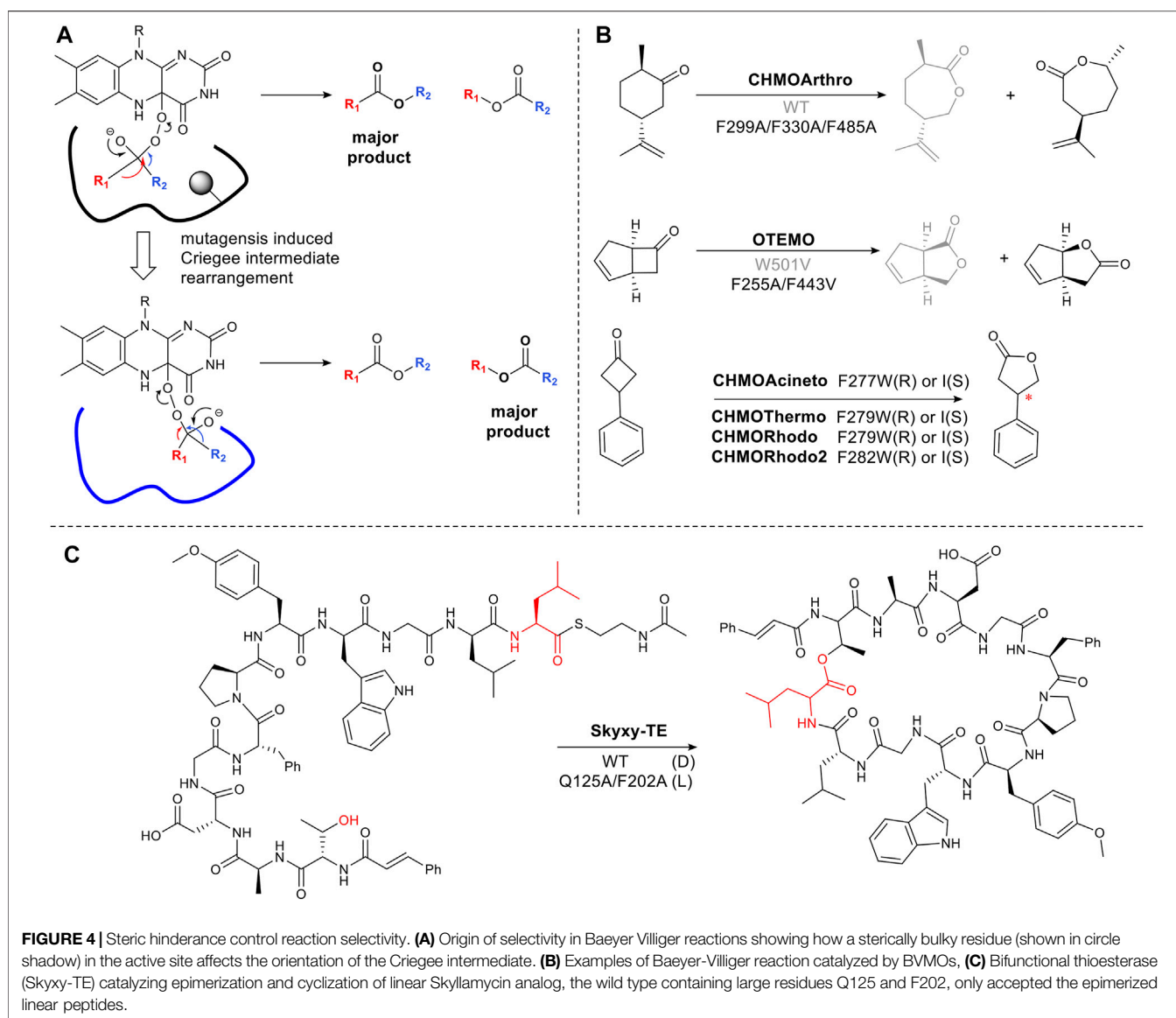
2C,E). Optimization of the reversed enantioselectivity can be achieved by further enlarging the binding pocket (Qin et al., 2018).

The well characterized flavin-dependent ene-reductase biocatalyst, old yellow enzyme family (OYE), catalyzes the reduction of α , β -unsaturated ketones. Mutating the hotspot Trp116 results in reversed stereoselectivity of OYE1. This was first reported using (S)-carvone as a substrate (Padhi et al., 2009) (Figure 2D). OYE1 can also accept numerous Baylis-Hillman adducts to afford complementary chiral β -hydroxy carbonyl compounds (Figure 2D) (Walton et al., 2011). Mutating Trp116 to a small residue such as Ala, flipped substrate binding, reversing the stereoselectivity. Introducing a large residue (Phe) did not affect stereoselectivity (Pompeu et al., 2013). For the reduction of Baylis-Hillman adducts, W116I not only provides more space for the substrate but also for a water molecule, which stabilizes the alcohol group of substrates through hydrogen bonding (Pompeu et al., 2012).

The above mentioned strategy has also been applied to the pyridoxyl phosphate-dependent transaminases. Humble et al utilized homology models of a transaminase from *Chromobacterium violaceum* allowing the rational design of the aldehyde/pyridoxal phosphate binding site to successfully switch the stereoselectivity of the reaction (Figure 3A) (Humble et al., 2012). Imine reductases (IREC) catalyze the same overall reaction to transaminases but differ in their mechanism of action. Imine reductases are NAD(P)H-dependent enzymes that catalyze the stereoselective addition of hydride to an imine (Figure 3B). For the imine reductase AspRedAM, mutating key substrate interacting residues identified from the crystal structure e.g. W210 resulted in a complete switch in stereochemical outcome. Trp and Gln are located on either side of the chiral amine

substrate. Mutants W210A and Q240A not only switched the stereochemistry of the product but also improved the stereoselectivity from 30% ee to greater than 90% ee (Aleku et al., 2017) (Aleku et al., 2018).

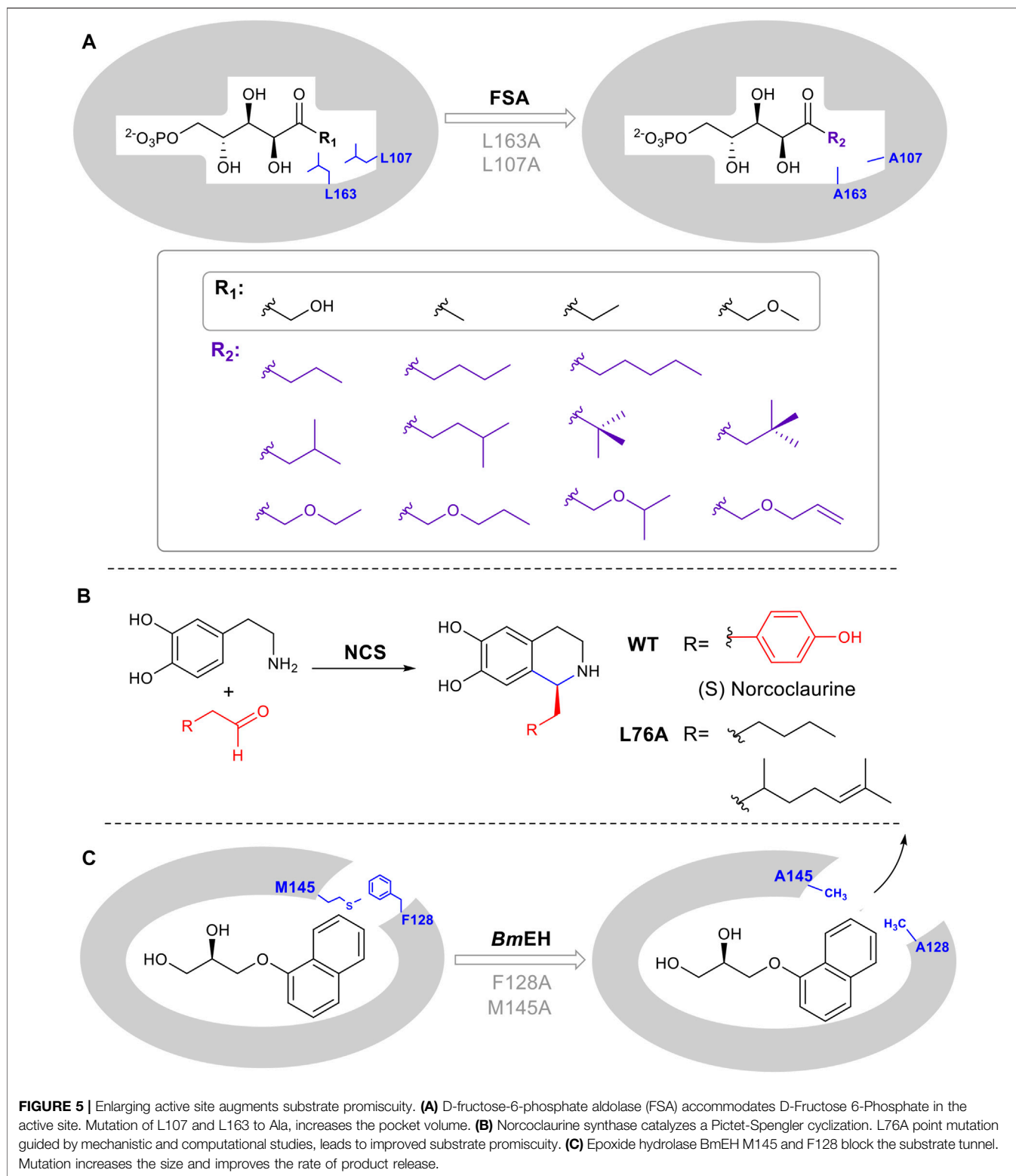
As described in Section 2.2 flavin-dependent Baeyer-Villiger monooxygenases catalyze the transformation, ketone to ester or lactone (Liu et al., 2020). The regioselectivity of chemical Baeyer Villiger oxidations can be predicted based on the migratory ability of the carbons alpha to the carbonyl carbon. This is determined by the capacity of the carbon to stabilize the partial positive charge which develops in the transition state via the inductive effect. Thus tertiary carbons migrate in favor of primary carbons (Li G. et al., 2018). However, enzymatic reactions can result in unexpected Baeyer Villiger products due to the influence of the binding site on the transition state, favoring an alternative rearrangement of the Criegee intermediate (Figure 4A). Changing the steric bulk and hydrophobicity of residues in the binding pocket can thus result in the inversion of regioselectivity. For example, cyclohexanone monooxygenase from *Arthrobacter* sp. (CHMOArthro) catalyzes the oxidation of *trans* dihydrocarvone to a lactone (Figure 4B). The regioselectivity was reversed by the substitution of three phenylalanine residues with alanine, resulting in a change in substrate binding in the enlarged pocket (Figure 4B) (Balke et al., 2016). The same strategy was used for trimethylcyclopentenylacetyl-CoA monooxygenase (OTEMO) (Balke et al., 2017) and CHMO_{Phi1} (Messiha et al., 2018) (Figure 4B). Surprisingly, a single phenylalanine residue determines selectivity among CHMOs. Mutagenesis of this conserved phenylalanine close to the binding pocket in CHMOs predictably changes the regioselectivity of lactone formation (Hu et al., 2020).



The approach of targeting large hydrophobic residues and mutating them to reduce the steric bulk and hydrophobicity in an active site, can hold for a variety of enzymes even on large complex molecules. Skyxy-TE, a single thioesterase domain from a multi-modular, non-ribosomal peptide synthetase megaenzyme, catalyzes epimerization and cyclization of a linear peptide (**Figure 4C**). The epimerization is a highly unusual reaction for thioesterases which typically catalyzes either macrocyclization or hydrolysis. However, the small space around a conserved serine residue which covalently binds the linear peptide as an ester, constrains the intermediate in a *pro-R* configuration. Expanding the space, via mutation to Ala, allowed L-configuration (Yu et al., 2021) (**Figure 4C**).

The cytochrome P450s TxtE and 5NTSlav can perform direct regioselective nitration of L-tryptophan producing 4-

nitro-L-tryptophan and 5-nitro-L-tryptophan respectively, using oxygen and nitric oxide as co-substrates (Barry et al., 2012) (Dodani et al., 2014). Nitration is a highly unusual reaction for a cytochrome P450, which typically carries out monooxygenation reactions e.g. hydroxylation, epoxidation as described in **Section 2.1**. The complementary regioselectivity of the reactions of TxtE and 5NTSlav is also intriguing. Dodani *et al.* identified that in TxtE His176 is involved in a direct edge-to-face interaction with the substrate, L-tryptophan. A single mutation of this residue in the flexible F/G loop of TxtE simultaneously controls loop dynamics and completely shifts the enzyme's regioselectivity from the C4 to the C5 position of L-tryptophan. The resulting mutants TxtE-H176F; TxtE-H176Y and TxtE-H176W (this is the residue found in 5NTSlav) had also an increased affinity for L-tryptophan (Dodani et al., 2014). The larger side chains



of these amino acids lead to a more tightly packed active site with different interactions with water molecules that shift the position of the substrate toward the heme, placing C-5 closer to

the nitrogen of the proposed ferric-peroxynitrite catalytic intermediate (Barry et al., 2012) (Dodani et al., 2014) (Louka et al., 2020). Interestingly, the structure of TxtE

does not significantly differ from that of conventional hydroxylating P450s and it is unclear why it carries out nitration and not hydroxylation. In fact, despite many decades of study it is not possible based on sequence or tertiary structure to predict what chemistry a particular P450 will catalyze.

2.4 Rational Mutagenesis to Expand Substrate Tolerance

While enzymes are attractive as catalysts due to their inherent stereo and regioselectivity, this often comes hand in hand with limited substrate tolerance which constrains potential biocatalytic application. There are several commonly used strategies to rationally expand and introduce promiscuity including enlarging the substrate-binding pocket, tuning the properties of a substrate tunnel or any conformationally flexible loops involved in substrate binding. Positions for mutagenesis can be identified using a crystal structure or homology model, followed by site-directed mutagenesis. For example, aldolases that catalyze the reversible, synthetically important condensation of aldehydes and ketones, are often limited by restricted recognition of donor components. Mutants L107A and L163A were designed in D-fructose-6-phosphate aldolase (FSA) from *Escherichia coli*, to accept a series of substrates containing various aliphatic side chains (Güclü et al., 2016) (Figure 5A). Additionally, in the computationally designed aldolase RA95.5-8F, a single amino acid mutation F112L makes the enzyme active toward large bulky cyclopentanone (MacDonald et al., 2020). In the epoxide hydrolase from *Bacillus megaterium* (*BmEH*), mutagenesis on two predicted hotspots M145 and F128 enhanced enzyme activities of 6- to 430- fold toward various bulky substrates (Kong and Ma, 2014). A similar structure/computational guided approach was taken for norcochlorine synthase (NCS). NCS is a plant alkaloid biosynthetic enzyme that catalyzes a stereoselective Pictet-Spengler condensation to produce pharmaceutically important tetrahydroisoquinolines (Figure 5B) (Lichman et al., 2015). A combination of structural and computational studies helped to elucidate the conformation of substrates in the NCS active site. A single leucine residue in the active site was identified as interacting with the substrate aldehyde R group. Once mutated, the change in the binding pocket made it possible to diversify the aldehydes tolerated by the enzyme (Lichman et al., 2015).

In several enzyme families, the substrate must pass through a tunnel connecting the buried active site with the enzyme surface. The tunnel is thus substrate selective and altering its properties can result in a broadening of substrates used by the enzyme, thus increasing promiscuity. *BmEH* an epoxide hydrolase, showed poor activity toward bulky α -naphthyl glycidyl. The introduction of M145A or F128A expanded the tunnel, enabling product release. The activity was increased 42 and 25 times respectively (Figure 5C) (Kong and Yuan, 2014).

2.5 Mutating Residues Directly Involved in Catalysis

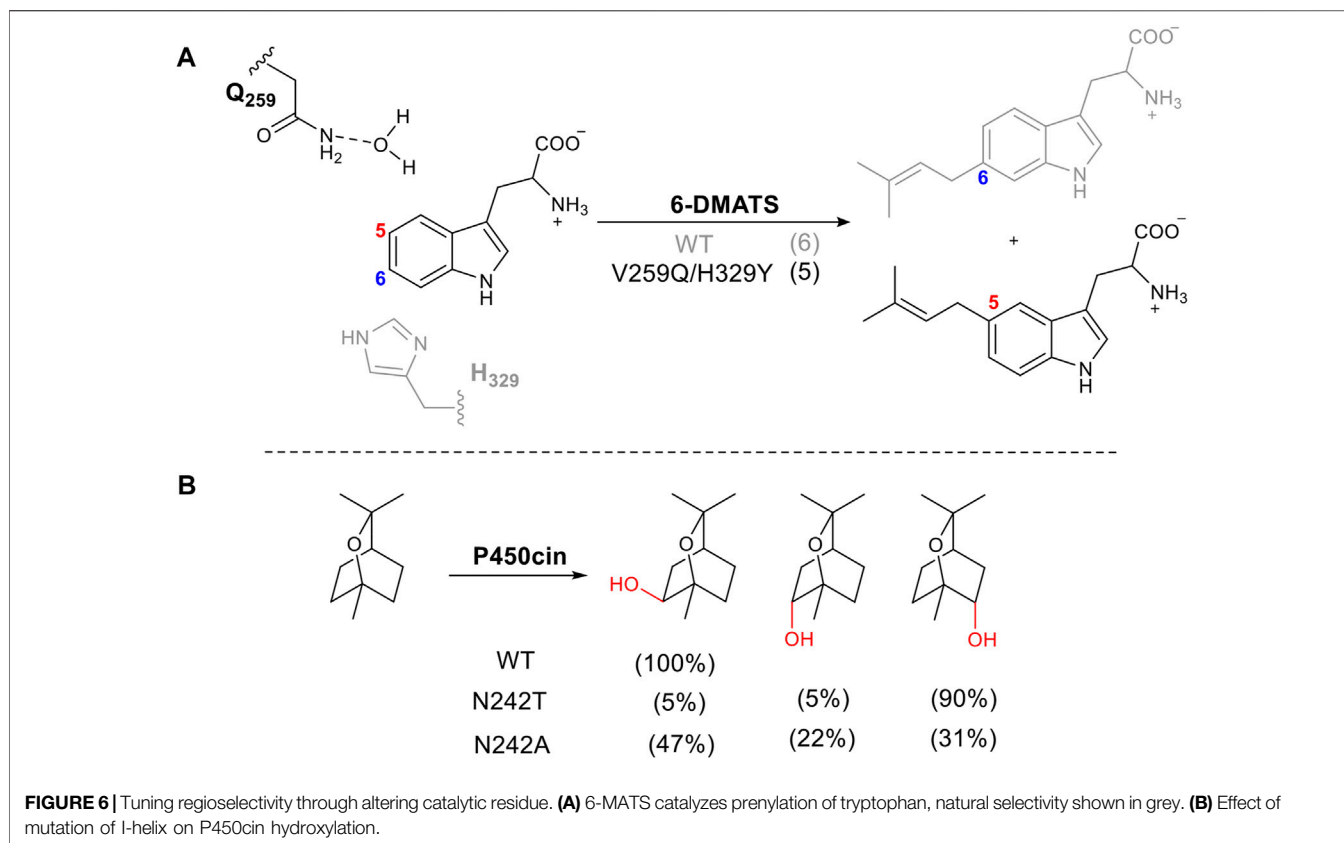
Amino acids directly involved in catalysis are usually not the first choice for mutation when attempting to alter stereo- or regioselectivity, as it tends to result in loss of activity or negative changes in kinetic parameters. However, there are several examples where this approach has been successful. Bacterial tryptophan C6-prenyltransferases (6-DMATS) catalyze selective alkylation at C6 of the tryptophan indole ring. The reaction occurs via Friedel-Crafts alkylation using dimethylallyl diphosphate as the prenyl donor (Figure 6A). A double mutant V259Q/H329Y changed the catalytic base from His329, adjacent to carbon 6 to Gln259. This changed the regioselectivity of deprotonation via a structured water molecule, redirecting the prenylation to carbon 5. This approach was informed by structural elucidation and comparison of 6-DMATS and the complementary C5-prenyltransferase, 5-DMATS, allowing structure-guided engineering. The authors also note the challenges in this work in which several mutants lose selectivity and produce multiple regioisomers (Ostertag et al., 2021).

The cytochrome P450, P450cin, catalyzes an enantiospecific hydroxylation of monoterpene, 1,8-cineole, to produce (1R)-6-hydroxycineole (Figure 6B). P450cin contains a deviation from a P450 key motif (Stok et al., 2019). The I-Helix of P450s lies above the heme cofactor and contains the consensus sequence (AGXD/ET) which introduces a kink in the helix (Poulos, 2014). The threonine plays a vital role in the catalytic cycle, enabling the protonation of key intermediates in the reduction of oxygen to form the active oxidizing species (Nagano and Poulos, 2005). The residue in this position in P450cin is asparagine instead of threonine. When N242 is mutated to the consensus residue, threonine, the orientation of the substrate in the active site is changed, exposing a different C-H bond to hydrogen abstraction. The result is a dramatic alteration in regio and stereoselectivity (Figure 6B).

Alteration of catalytic residues can also confer new reactivity on enzymes, as exemplified by a redesigned pyruvate decarboxylase, *ZmpPDC* which catalyzes asymmetric carbon-carbon bond formation (Meyer et al., 2011). Wild type *ZmpPDC* uses Glu473 as a proton donor to enable the formation of a carbanion intermediate in the decarboxylation catalytic cycle releasing acetaldehyde. Replacing Glu473 with Gln, as well as providing benzaldehyde as an acceptor, enables the synthesis of phenylacetylcarbinol, thereby constructing a new C-C bond and a stereocenter (Meyer et al., 2011). Intriguingly, further study on Glu473 enabled precise control of its stereoselectivity by replacing it with larger or smaller residues (Wechsler et al., 2015).

3 STRUCTURE-GUIDED SEMI-RATIONAL ENGINEERING

The examples above show that adjusting steric constraints in the binding pocket and changing key residues involved in catalysis or



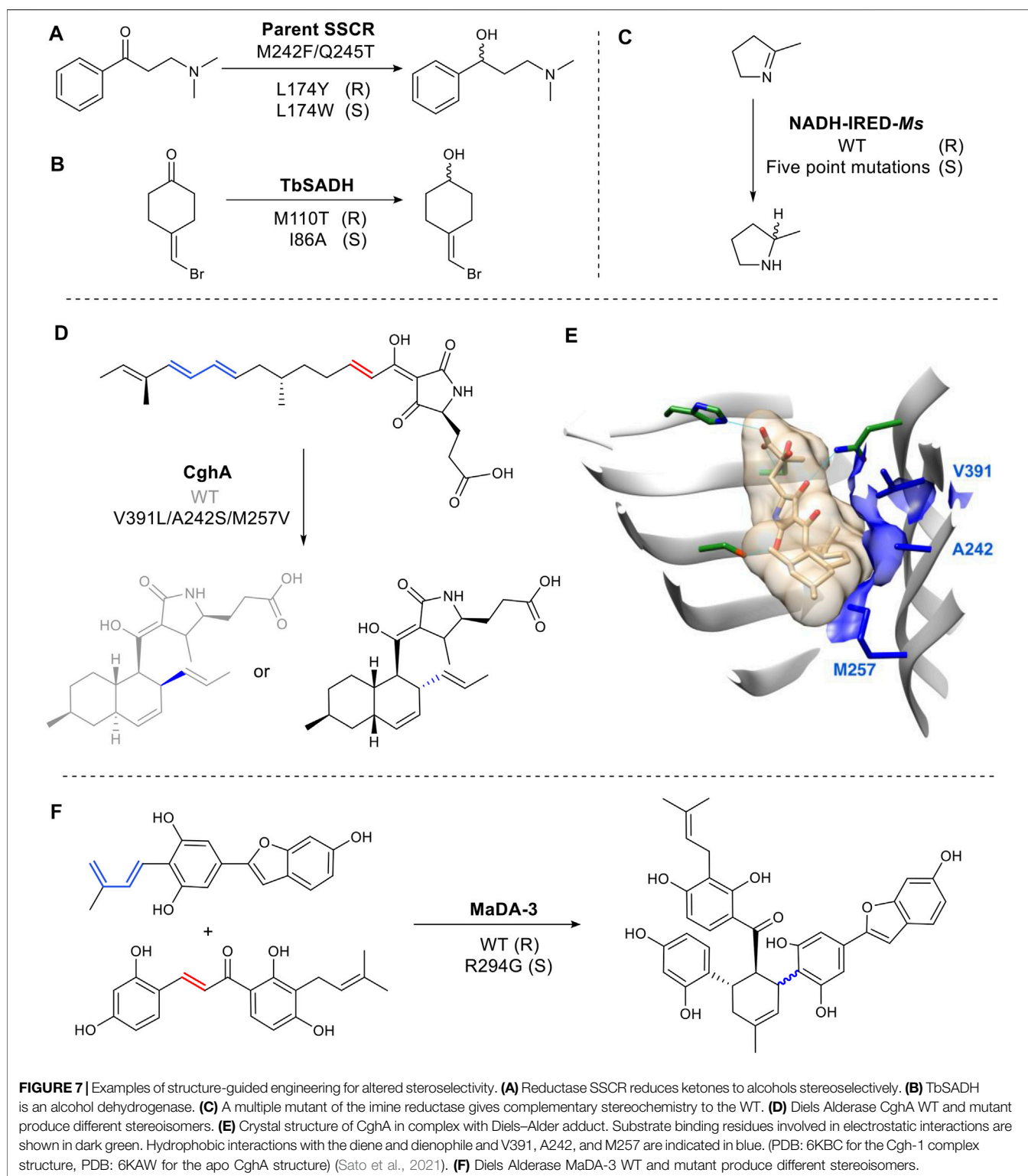
substrate binding, are powerful strategies to alter reaction outcomes. However, interactions between the substrate and the enzyme are often challenging to predict, and the steric modification strategy is substrate-dependent. For example, with carbonyl reductases, this strategy still limits substrates to an aromatic ring and a short-carbon chain on either side of the carbonyl carbon (Li et al., 2021). Structure-guided semi-rational engineering, through mechanistic understanding and computational modeling or more extensive screening of mutants, to identify key residues, are valuable additional strategies (Wang, Li and Reetz, 2017).

3.1 Computational Modelling

Computational tools are increasingly important in protein engineering. Free and easy-to-use software now exists to enable researchers to carry out bioinformatic analysis, create homology models and dock substrates into active sites. The power of these tools is apparent in the examples given above. However, these strategies do not account for protein dynamics affecting substrate binding/release or other aspects of the catalytic cycle. More powerful computational modeling such as Quantum Mechanics/Molecular Mechanics (QM/MM) methods, molecular dynamics (MD), quantum chemical (QC), and empirical valence bond (EVB) calculations are required to create a more nuanced understanding of the relationships between protein structure and function (Derat and Kamerlin, 2022).

These techniques are widely used to enable the interpretation of experimental data to understand enzymatic mechanisms and rationalize the enzyme selectivity in several of the enzyme families discussed in this review including ene-reductases (Lonsdale and Reetz, 2015), diels-alderase (Byrne et al., 2016), BVMOs regioselectivity (Li G. et al., 2018) (Dong et al., 2022) and ketoreductase stereoselectivity (Serapian and Van Der Kamp, 2019).

A key attraction of computational methodology is the ability to carry out mutagenesis *in silico* and, thus, rationally redesign the enzyme, “preengineer”, prior to experiments. This can reduce experimental effort and generates key insights into the relationship between structure and mechanism. Empirical valence bond (EVB) calculates the reaction activation energy. This can be used to predict the effect on the catalysis of particular mutations. This approach allows the computational optimization of enzyme catalysis of a given reaction rather than predicting changes in selectivity (Mondal et al., 2020). Using, for example, Rossetta, enzyme specificity and substrate tolerance can be altered, by focusing on key areas of the active site, introducing geometric constraints on areas that need to remain unchanged and analyzing the dynamic conformations to predict the outcome (Wijma et al., 2015). A recent example is AspB, an aspartase from *Bacillus sp.* YM55-1 that catalyzes the reversible deamination of aspartate. Wild-type AspB is highly substrate selective. A mutant of AspB, which demonstrated activity as a β -amino acid lyase, was only detected after cluster screening of



300,000 clones (Vogel et al., 2014). Recently, understanding of the enzymatic mechanism and structure of AspB was exploited to rationally engineer promiscuous variants for hydroamination. Engineering was carried out *in silico* using Rosetta Enzyme Design. This programme allows the selective

redesign of particular parts of a binding pocket leaving key enzyme-substrate interactions untouched (Li R. et al., 2018). For example, four residues (Thr187, Met321, Lys324, and Asn326) which line the original aspartate, a carboxylate, binding site were replaced with hydrophobic residues to facilitate binding of

the new α,β -unsaturated carbonyl electrophiles (Li et al.). Depending upon the penalty score of the constraints and structural inspection, just a few variants were identified and experimentally tested. Engineered AspB catalyzed hydroamination of various substituted acrylates (34 designs were screened for crotonic acid, 5 designs for (E)-2-pentenoic acid, 6 designs for fumaric acid monoamide and 30 designs for (E)-cinnamic acid). Moreover, the amine binding pocket of AspB was also engineered using the same strategy. A series of β -amino acids were thus synthesized with high regio- and enantioselectivity and on industrially relevant scales (Cui et al., 2021). These examples show how computational modelling can dramatically reduce experimental efforts.

Flexible loops around the active site play an important role in enzyme function but are often poorly defined in crystal structures. Molecular Dynamics (MD) simulations can identify key residues to influence substrate promiscuity. In the alcohol dehydrogenase, TbSADH, two rigid residues located on the loop near the binding pocket were identified from the analysis of the Root Mean Square Fluctuations (RMSFs) (Liu et al., 2019). Saturation mutagenesis of these residues was carried out to increase loop fluctuation. This generated a variant which could catalyze the reduction of a series of bulky ketones that are not accepted by the wild-type enzyme (Liu et al., 2019). Similarly, proline residues can provide structural rigidity and thus often play important roles in controlling protein structural dynamics. Mutating proline and its flanking residues located in loop regions near the active site can increase flexibility, thus indirectly adjusting the size of the binding pocket. For example, the TbSADH mutant P84S can accommodate non-natural bulky diaryl ketones, and mutant P84S/I86A carried out the reaction with a near-perfect conversion and stereoselectivity (Qu et al., 2021). In the case of phenylacetone monooxygenase (PAMO), the substitution of two conserved proline residues near the active site, increases the activity toward a series of 2-substituted cyclohexanones, which are not accepted by the wild-type PAMOs (Reetz and Wu, 2009) (Wu et al., 2010).

3.2 Structure Guided Semi-Rational Mutagenesis

Instead of subjecting one or two amino acids to site-directed mutagenesis to alter selectivity, it is often necessary to investigate an entire loop or structural motif to identify the key residue or residues. This approach can generate many mutants but it is useful when there is no other obvious method to predict important residues or interactions. Common strategies include alanine scanning (mutating each residue to alanine to identify an effect) or saturation mutagenesis (mutating individual residues to all 20 proteinogenic amino acids to determine the most advantageous) (Wang et al., 2017). This methodology has been applied across diverse enzyme families catalyzing a variety of chemistries.

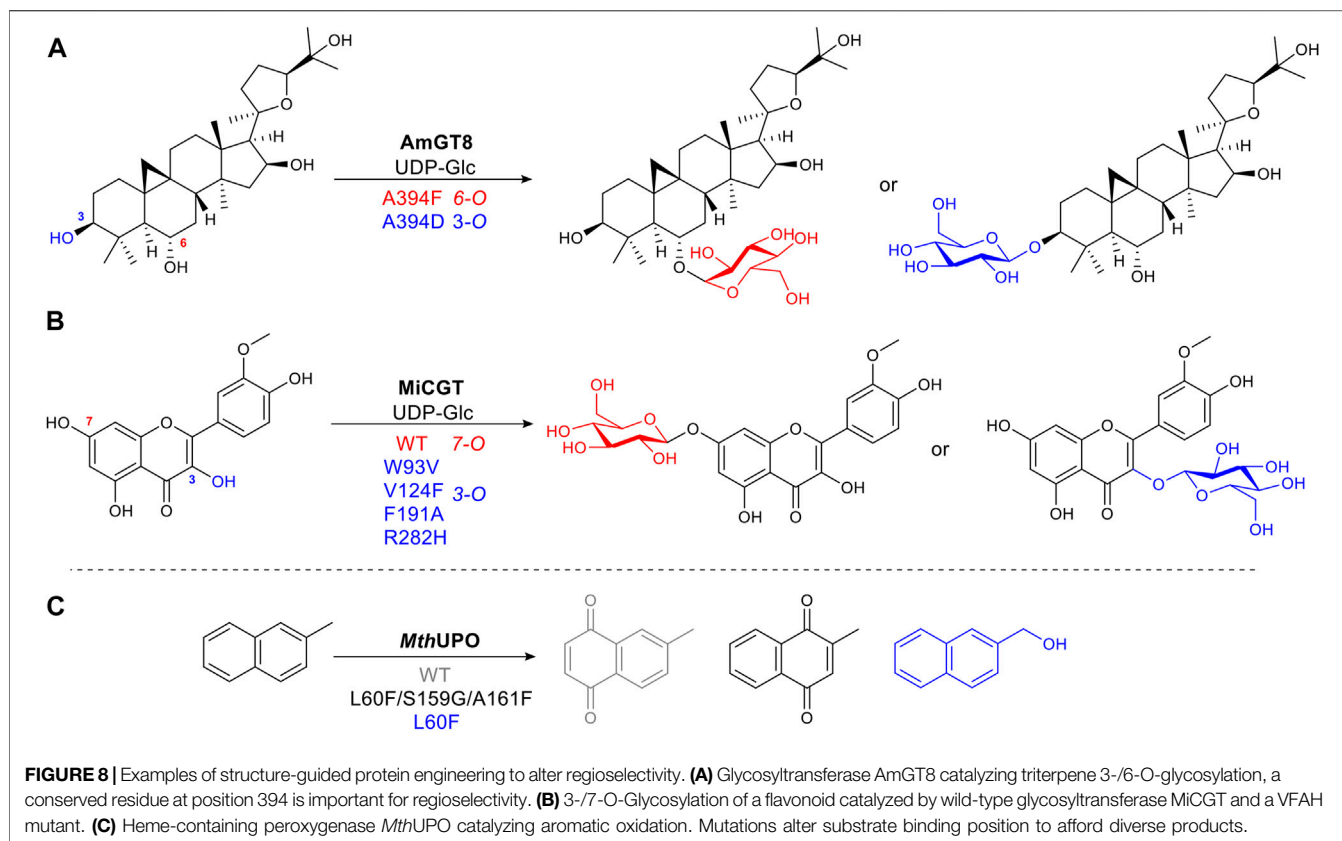
In the active site of the carbonyl reductase (SSCR) from *Sporobolomyces salmonicolor* AKU4429 (Figure 7A), a Tyr174 introduces a hydrogen bond between the tyrosine hydroxyl group and the substrate carbonyl oxygen resulting

in the stabilization of *pro-R* conformation. While the mutant, Trp174, gave rise to the opposite orientation (Zhang et al., 2015) (Figure 7A). Reduction of 4-(bromomethylidene) cyclohexanone is catalyzed by wild-type TbSADH with a poor enantioselectivity (66% ee), as its highly symmetric structure can bind either a *pro-R* or *pro-S* conformation (Figure 7B). Mutating M110 to threonine increased R selectivity to 97% e.e. while mutation at I86 enhanced S selectivity to 98% ee. (Agudo et al., 2013). It was proposed that the side chain of Thr110 is responsible for the formation of a *pro-R* conformation by forming a hydrogen bond with a bromine identified through molecular dynamics simulations (Maria-Solano et al., 2017) (Figure 7B). The hydrogen bonding of the halogen atom and XH/ π interaction have been shown on a molecular level to play a critical role in determining the stereoselectivity (Chen et al., 2018).

While rare, changes to the binding site of a cofactor can also be used change selectivity. For example, in the imine reductase NADH-IRED-Ms (Figure 7C), five amino acid mutations (positions 241- 245) change the orientation of NADH cofactor binding. The resulting switch in hydride attack, gives an inversion of product stereochemistry compared to wild type (Stockinger et al., 2021).

Over the last several years there has been interest in the discovery and characterization of Diels Alderases (DAs) (Minami and Oikawa, 2016), as well as the design of artificial enzymes for Diels–Alder reactions (Ghattas et al., 2021). A biocatalysed Diels Alder reaction is of significant interest as the chemical transformation often requires high pressures or temperatures and long reaction times (Yang and Gao, 2018). However, stereochemical control (endo/exo) of the enzymatic reaction is vital to make any future biocatalytic process viable. CghA catalyzes an intramolecular Diels–Alder reaction to form octalin natural products (Sato et al., 2021). The stereoselectivity was successfully converted from endo to unfavored exo-selectivity by reshaping the active site with three mutations to organize an exo transition state for the diene and the dienophile (Sato et al., 2021) (Figures 7D,E). *Morus alba* Diels-Alderase (MaDA) catalyzes an intermolecular Diels–Alder reaction. Interestingly, MaDA-3 has natural exo-selectivity. The transition state is stabilized through a cation- π interaction between a key R294 residue and the dihydroxyphenyl ring of the dienophile. Replacement of the residue afforded some endo product (Gao et al., 2021) (Figure 7F).

Glycosylation is a common, vital, late-stage functionalization reaction in natural product biosynthesis (Kren and Martinkova, 2012) (Liao et al., 2018). Selective chemical glycosylation of complex molecules is challenging, often requiring tedious protection and deprotection steps. Thus a selective enzymatic route is desirable. Wild type glycosyltransferases (GTs) catalyze glycosidic bond formation, which suffers from poor regioselectivity due to its large binding pocket, and thus multiple substrate-binding modes or conformations (Nidetzky et al., 2018). Longer distances between substrate and enzyme make it difficult to determine in a rational way which sites affect the substrate binding position. To narrow this down without alanine scanning the whole site or using full saturation mutagenesis of each site, an approach known as “small but smart” was used. This less intensive method mutates the target



residue to a representative of each class of amino acids, e.g. positively charged, negatively charged, polar uncharged etc., to identify which group makes the greatest impact, thus significantly reducing experimental effort. AmGT8 catalyzes glycosylation of triterpenes (**Figure 8A**). Activity assays using a selection of substrate derivatives were performed, followed by the comparison of different docking models of the substrate with desired regioselectivity. From the activity study of various size triterpenes, three AmGT8 docking models with different regioselectivities were established, and active site amino acids were divided into four groups. After screening a small set of mutants, the conserved residue, A394, was identified as crucial for regioselectivity (Zhang et al., 2021).

Alanine scanning the active site was utilized to change the selectivity of MiCGT, which catalyzes glycosylation of flavonoids. After iterative saturation mutagenesis, a mutant containing four amino acid changes, that shifted the regioselectivity from 7-O to 3-O, was identified (Wen et al., 2021) (**Figure 8B**).

The peroxxygenase *MthUPO* catalyzes the oxidation of 2-methylnaphthalene. Fine-tuning substrate position relative to the active oxygen species formed on the heme iron center, accomplished diverse chemo- and regioselective oxidation reactions. For mutant L60F, introducing a bulky phenylalanine allowed only the methyl group to get close enough to the catalytic center to be oxidized. Additional mutations, L60F/S159G/A161F, increased hydrophobicity, pushing the naphthyl aromatic ring moiety toward the heme-iron center, to afford a different quinone product (Knorrscheidt et al., 2021) (**Figure 8C**).

4 FUTURE CHALLENGES AND OUTLOOK

There is little doubt that biocatalysis will feature heavily in the future of synthesis whether it is bulk chemicals or complex molecules. Small precursor chemicals are frequently derived from fossil fuels and are thus unsustainable. Equally, there is a need for optically pure precursors and enzymes are well suited to their production. Complex, high-value molecules, represent excellent targets for biocatalysis, especially as the initial high cost of biocatalyst development may be more justifiable. A recent application of biocatalysis to the synthesis of the COVID-19 drug by Merck shows that there is already a recognition of the power of biocatalysis and a clear push from industry toward increased use (McIntosh et al., 2021).

Great strides have been made in both the understanding and engineering of enzymes and this is an exciting time in the field. This has been facilitated by several factors. Advances in molecular biology mean that processes such as cloning and mutagenesis are facile and can even be automated. Structural information from X-ray crystallography, NMR and now EM is vital for enzyme engineering, as demonstrated above. Developments in these techniques and data processing has speeded up the process of structure elucidation. Excitingly, AlphaFold now offers the opportunity to predict structures of structurally uncharacterized or indeed un-crystallizable enzymes (Jumper et al., 2021) (Varadi et al., 2022). Improved computational methods are providing greater insight into catalytic mechanisms and molecular dynamics. Developments in

cofactor recycling and improving enzyme stability mean that enzymes previously thought of as too complex or those requiring expensive cofactors are now viable targets for use as biocatalysts (Mordhorst and Andexer, 2020).

Such progress has meant that the ambition of the field has also grown. The goal for many in the field is to redesign enzymes to carry out new reactions, particularly those chemistries not currently found in biology, so-called “new to nature” transformations. Some of the best examples of new to nature reactions have come via directed evolution as pioneered by Frances Arnold (Chen and Arnold, 1993). A classic example from the Arnold lab evolved P450_{BM3} to carry out cyclopropanation using a carbene generated *in situ* (Coelho et al., 2013). While cyclopropanation reactions are not new to nature, they are new to P450s. In addition, the chemistry, using a diazoacetate to generate the Fe-bound carbene, does not have a known analog in biological chemistry (Liu and Arnold, 2021). This result has been built on in recent examples, including engineered cytochrome P450 catalyzed atom transfer radical cyclization (ATRC), where a new C-C bond and a new C-Halogen bond are formed (Zhou et al., 2021). In a further recent development from the Arnold lab, they report the P450 catalyzed enantioselective ring expansion of aziridines to azetidines (Miller et al., 2022). Other methods to enable new to nature reactions (Leveson-Gower et al., 2019) include utilizing expanded genetic code via amber codon technology and tuning active site electronics (Ortmayer et al., 2020) as well as using Rosetta to design enzymes to carry out new to nature chemistry (Crawshaw et al., 2021).

The integration of chemocatalysis and enzymes has also been pursued as a way of combining the advantages of chemical and enzymatic catalysis. The goal is to utilize proteins or enzymes as scaffolds to house small-molecule catalysts (Schwizer et al., 2018). The catalysts themselves are usually organometallic and carry out the chemistry that is rare or not found in nature. They effectively act as an unnatural cofactor, coordinated to a native or engineered protein scaffold. This delivers all the advantages of enzyme catalysis, e.g., hydrophobic environment, increase in the effective concentration of reactants and most importantly, stereo and regioselectivity, which are key challenges in organic synthesis (Schwizer et al., 2018). Scaffolds are chosen to be accessible to a broad range of substrates.

Despite this progress, significant challenges remain. Protein engineering either rationally or via directed evolution is time-consuming. Efficient screening of mutants usually requires operationally simple, robust spectrophotometric assays, that can be read on plate reader or similar. Creating such assays is in turn time consuming and in some cases may not be possible. Equally, screening for one output may miss other potentially useful data, e.g., changes in chemistry or selectivity. Detection of serendipitous outcomes requires

more powerful analytics. High-throughput LCMS would provide more information, i.e., all reaction products including stereo- and regioisomers but it is more operationally complex and expensive. Additionally, major improvements in the analysis of high throughput LCMS data, which is orders of magnitude more complex than that from a colorimetric assay, are required.

As seen in examples throughout this review “preengineering” *in silico* is increasingly important. Improved methods for *in silico* screening, such as deep mutational analysis (Dunham and Beltrao, 2021), will reduce experimental effort and increase the rate of progress. The logical progression of these strategies is *in silico* enzyme design facilitated by, for example, Rosetta. This tool has already been applied by several groups (Crawshaw et al., 2021) (Basanta et al., 2020) (Richter et al., 2011). Both approaches will also generate greater insight into the factors affecting substrate binding and catalytic mechanism which in turn will lead to more predictability. (Bunzel et al., 2021) (Jindal et al., 2019).

Thus, there are many exciting routes from which new biocatalysts will emerge. What is clear, is a greater understanding of the relationship between protein structure and enzyme function is needed. While crystallographic data is crucial for our understanding of enzymes, they offer us a static picture of an enzyme in one state. Insight into protein dynamics during catalysis will enable a greater understanding of the roles of residues in the active site and beyond, including their cooperativity. The importance of flexible regions in enzyme catalysis, often poorly defined in crystal structures, has been poorly explored. Computational methodology will enable a greater understanding of the role of flexible regions and protein dynamics in catalysis. Thus new computational tools and their democratization will, alongside the ongoing protein engineering revolution, lead to the second great revolution in enzyme engineering and is already proving exciting (Büchler et al., 2022) (Crawshaw et al., 2021). This combination will provide a much-needed pool of sustainable catalysts and hopefully a new era in chemical synthesis.

AUTHOR CONTRIBUTIONS

YD, GP-O, JP, and SMB researched and wrote the article, designed and created the figures.

FUNDING

Research on enzymology in the Barry lab was supported by grants from the RSC (E21-2982458970) and BBSRC (BB/P019811/1). JP is funded by a PhD scholarship from KCL.

REFERENCES

Agudo, R., Roiban, G.-D., and Reetz, M. T. (2013). Induced Axial Chirality in Biocatalytic Asymmetric Ketone Reduction. *J. Am. Chem. Soc.* 135 (5), 1665–1668. doi:10.1021/ja3092517

Aleku, G. A., France, S. P., Man, H., Mangas-Sanchez, J., Montgomery, S. L., Sharma, M., et al. (2017). A Reductive Aminase from *Aspergillus oryzae*. *Nat. Chem.* 9 (10), 961–969. doi:10.1038/nchem.2782

Aleku, G. A., Man, H., France, S. P., Leipold, F., Hussain, S., Toca-Gonzalez, L., et al. (2016). Stereoselectivity and Structural Characterization of an Imine Reductase (IRED) from *Amycolatopsis orientalis*. *ACS Catal.* 6 (6), 3880–3889. doi:10.1021/acscatal.6b00782

- Aleku, G. A., Mangas-Sanchez, J., Citoler, J., France, S. P., Montgomery, S. L., Heath, R. S., et al. (2018). Kinetic Resolution and Deracemization of Racemic Amines Using a Reductive Aminase. *ChemCatChem* 10 (3), 515–519. doi:10.1002/cctc.201701484
- Ali, M., Ishqi, H. M., and Husain, Q. (2020). Enzyme Engineering: Reshaping the Biocatalytic Functions. *Biotechnol. Bioeng.* 117 (6), 1877–1894. doi:10.1002/bit.27329
- Arndtsen, B. A., Bergman, R. G., Mobley, T. A., and Peterson, T. H. (1995). Selective Intermolecular Carbon-Hydrogen Bond Activation by Synthetic Metal Complexes in Homogeneous Solution. *Acc. Chem. Res.* 28 (3), 154–162. doi:10.1021/ar00051a009
- Arnold, F. H. (2018). Directed Evolution: Bringing New Chemistry to Life. *Angew. Chem. Int. Ed.* 57 (16), 4143–4148. doi:10.1002/anie.201708408
- Balke, K., Bäumgen, M., and Bornscheuer, U. T. (2017). Controlling the Regioselectivity of Baeyer-Villiger Monooxygenases by Mutation of Active-Site Residues. *ChemBioChem* 18 (16), 1627–1638. doi:10.1002/cbic.201700223
- Balke, K., Schmidt, S., Genz, M., and Bornscheuer, U. T. (2016). Switching the Regioselectivity of a Cyclohexanone Monooxygenase toward (+)-Trans-Dihydrocarvone by Rational Protein Design. *ACS Chem. Biol.* 11 (1), 38–43. doi:10.1021/acscchembio.5b00723
- Barry, S. M., Kers, J. A., Johnson, E. G., Song, L., Aston, P. R., Patel, B., et al. (2012). Cytochrome P450-Catalyzed L-Tryptophan Nitration in Thaxtomin Phytotoxin Biosynthesis. *Nat. Chem. Biol.* 8 (10), 814–816. doi:10.1038/nchembio.1048
- Basanta, B., Bick, M. J., Bera, A. K., Norn, C., Chow, C. M., Carter, L. P., et al. (2020). An Enumerative Algorithm for De Novo Design of Proteins with Diverse Pocket Structures. *Proc. Natl. Acad. Sci. U.S.A.* 117 (36), 22135–22145. doi:10.1073/pnas.2005412117
- Bell, E. L., Finnigan, W., France, S. P., Green, A. P., Hayes, M. A., Hepworth, L. J., et al. (2021). Biocatalysis. *Nat. Rev. Methods Prim.* 1 (1), 46. doi:10.1038/s43586-021-00044-z
- Büchler, J., Malca, S. H., Patsch, D., Voss, M., Turner, N. J., Bornscheuer, U. T., et al. (2022). Algorithm-aided Engineering of Aliphatic Halogenase WelO5* for the Asymmetric Late-Stage Functionalization of Soraphens. *Nat. Commun.* 13 (1), 1–11. doi:10.1038/s41467-022-27999-1
- Bunzel, H. A., Anderson, J. L. R., Hilvert, D., Arcus, V. L., van der Kamp, M. W., and Mulholland, A. J. (2021). Evolution of Dynamical Networks Enhances Catalysis in a Designer Enzyme. *Nat. Chem.* 13 (10), 1017–1022. doi:10.1038/s41557-021-00763-6
- Byrne, M. J., Lees, N. R., Han, L.-C., van der Kamp, M. W., Mulholland, A. J., Stach, J. E. M., et al. (2016). The Catalytic Mechanism of a Natural Diels-Alderase Revealed in Molecular Detail. *J. Am. Chem. Soc.* 138 (19), 6095–6098. doi:10.1021/jacs.6b00232
- Chen, K., and Arnold, F. H. (1993). Tuning the Activity of an Enzyme for Unusual Environments: Sequential Random Mutagenesis of Subtilisin E for Catalysis in Dimethylformamide. *Proc. Natl. Acad. Sci. U.S.A.* 90 (12), 5618–5622. doi:10.1073/pnas.90.12.5618
- Chen, K., Wu, S., Zhu, L., Zhang, C., Xiang, W., Deng, Z., et al. (2016). Substitution of a Single Amino Acid Reverses the Regiospecificity of the Baeyer-Villiger Monooxygenase PntE in the Biosynthesis of the Antibiotic Pentalenolactone. *Biochemistry* 55 (48), 6696–6704. doi:10.1021/acs.biochem.6b01040
- Chen, X., Zhang, H., Feng, J., Wu, Q., and Zhu, D. (2018). Molecular Basis for the High Activity and Enantioselectivity of the Carbonyl Reductase from *Sporobolomyces salmonicolor* toward α -Haloacetophenones. *ACS Catal.* 8 (4), 3525–3531. doi:10.1021/acscatal.8b00591
- Coelho, P. S., Brustad, E. M., Kannan, A., and Arnold, F. H. (2013). Olefin Cyclopropanation via Carbene Transfer Catalyzed by Engineered Cytochrome P450 Enzymes. *Science* 339 (6117), 307–310. doi:10.1126/science.1231434
- Crawshaw, R., Crossley, A. E., Johannissen, L., Burke, A. J., Hay, S., Levy, C., et al. (2021). Engineering an Efficient and Enantioselective Enzyme for the Morita-Baylis-Hillman Reaction. *Nat. Chem.* 14, 313–320. doi:10.1038/s41557-021-00833-9
- Cui, Y., Wang, Y., Tian, W., Bu, Y., Li, T., Cui, X., et al. (2021). Development of a Versatile and Efficient C-N Lyase Platform for Asymmetric Hydroamination via Computational Enzyme Redesign. *Nat. Catal.* 4 (5), 364–373. doi:10.1038/s41929-021-00604-2
- Dalton, T., Faber, T., and Glorius, F. (2021). C-H Activation: Toward Sustainability and Applications. *ACS Cent. Sci.* 7 (2), 245–261. doi:10.1021/acscentsci.0c01413
- de Gonzalo, G., and Paul, C. E. (2021). Recent Trends in Synthetic Enzymatic Cascades Promoted by Alcohol Dehydrogenases. *Curr. Opin. Green Sustain. Chem.* 32, 100548. doi:10.1016/j.cogsc.2021.100548
- Derat, E., and Kamerlin, S. C. L. (2022). Computational Advances in Protein Engineering and Enzyme Design. *J. Phys. Chem. B* 126 (13), 2449–2451. doi:10.1021/acs.jpcc.2c01198
- Dodani, S. C., Cahn, J. K. B., Heinisch, T., Brinkmann-Chen, S., McIntosh, J. A., and Arnold, F. H. (2014). Structural, Functional, and Spectroscopic Characterization of the Substrate Scope of the Novel Nitrating Cytochrome P450 TxtE. *ChemBioChem* 15 (15), 2259–2267. doi:10.1002/cbic.201402241
- Dong, Y., Li, T., Zhang, S., Sanchis, J., Yin, H., Ren, J., et al. (2022). Biocatalytic Baeyer-Villiger Reactions: Uncovering the Source of Regioselectivity at Each Evolutionary Stage of a Mutant with Scrutiny of Fleeting Chiral Intermediates. *ACS Catal.* 12 (6), 3669–3680. doi:10.1021/acscatal.2c00415
- Dunham, A. S., and Beltrao, P. (2021). Exploring Amino Acid Functions in a Deep Mutational Landscape. *Mol. Syst. Biol.* 17 (7), 1–14. doi:10.15252/msb.202110305
- Ensari, Y., Dhoke, G. V., Davari, M. D., Bocola, M., Ruff, A. J., and Schwaneberg, U. (2017). Inversion of cpADH5 Enantioselectivity and Altered Chain Length Specificity for Methyl 3-Hydroxyalkanoates. *Chem. Eur. J.* 23 (51), 12636–12645. doi:10.1002/chem.201702581
- Gao, L., Zou, Y., Liu, X., Yang, J., Du, X., Wang, J., et al. (2021). Enzymatic Control of Endo- and Exo-Stereoselective Diels-Alder Reactions with Broad Substrate Scope. *Nat. Catal.* 4, 1059–1069. doi:10.1038/s41929-021-00717-8
- Ghatts, W., Mahy, J. P., Réglier, M., and Simaan, A. J. (2021). Artificial Enzymes for Diels-Alder Reactions. *ChemBioChem* 22, 443–459. doi:10.1002/cbic.202000316
- Greule, A., Stok, J. E., De Voss, J. J., and Cryle, M. J. (2018). Unrivalled Diversity: the Many Roles and Reactions of Bacterial Cytochromes P450 in Secondary Metabolism. *Nat. Prod. Rep.* 35 (8), 757–791. doi:10.1039/c7np00063d
- Güclü, D., Szekrenyi, A., Garrabou, X., Kickstein, M., Junker, S., Clapés, P., et al. (2016). Minimalist Protein Engineering of an Aldolase Provokes Unprecedented Substrate Promiscuity. *ACS Catal.* 6 (3), 1848–1852. doi:10.1021/acscatal.5b02805
- Hu, Y., Xu, W., Hui, C., Xu, J., Huang, M., Lin, X., et al. (2020). The Mutagenesis of a Single Site for Enhancing or Reversing the Enantio- or Regiopreference of Cyclohexanone Monooxygenases. *Chem. Commun.* 56 (65), 9356–9359. doi:10.1039/d0cc03721d
- Hubert, C. B., and Barry, S. M. (2016). New Chemistry from Natural Product Biosynthesis. *Biochem. Soc. Trans.* 44 (3), 738–744. doi:10.1042/BST20160063
- Hughes, G., and Lewis, J. C. (2018). Introduction: Biocatalysis in Industry. *Chem. Rev.* 118 (1), 1–3. doi:10.1021/acs.chemrev.7b00741
- Humble, M. S., Cassimjee, K. E., Abedi, V., Federsel, H.-J., and Berglund, P. (2012). Key Amino Acid Residues for Reversed or Improved Enantiospecificity of an ω -Transaminase. *ChemCatChem* 4 (8), 1167–1172. doi:10.1002/cctc.201100487
- Jia, M., O'Brien, T. E., Zhang, Y., Siegel, J. B., Tantillo, D. J., and Peters, R. J. (2018). Changing Face: A Key Residue for the Addition of Water by Sclareol Synthase. *ACS Catal.* 8 (4), 3133–3137. doi:10.1021/acscatal.8b00121
- Jindal, G., Slanska, K., Kolev, V., Damborsky, J., Prokop, Z., and Warshel, A. (2019). Exploring the Challenges of Computational Enzyme Design by Rebuilding the Active Site of a Dehalogenase. *Proc. Natl. Acad. Sci. U.S.A.* 116 (2), 389–394. doi:10.1073/pnas.1804979115
- Jumper, J., Evans, R., Pritzel, A., Green, T., Figurnov, M., Ronneberger, O., et al. (2021). Highly Accurate Protein Structure Prediction with AlphaFold. *Nature* 596 (7873), 583–589. doi:10.1038/s41586-021-03819-2
- Kelly, S. A., Mix, S., Moody, T. S., and Gilmore, B. F. (2020). Transaminases for Industrial Biocatalysis: Novel Enzyme Discovery. *Appl. Microbiol. Biotechnol.* 104 (11), 4781–4794. doi:10.1007/s00253-020-10585-0
- Knorrscheidt, A., Soler, J., Hünecke, N., Püllmann, P., Garcia-Borràs, M., and Weissenborn, M. J. (2021). Accessing Chemo- and Regioselective Benzylic and Aromatic Oxidations by Protein Engineering of an Unspecific Peroxygenase. *ACS Catal.* 11 (12), 7327–7338. doi:10.1021/acscatal.1c00847
- Koesoema, A. A., Standley, D. M., Senda, T., and Matsuda, T. (2020). Impact and Relevance of Alcohol Dehydrogenase Enantioselectivities on Biotechnological Applications. *Appl. Microbiol. Biotechnol.* 104 (7), 2897–2909. doi:10.1007/s00253-020-10440-2

- Kong, X.-D., Ma, Q., Zhou, J., Zeng, B.-B., and Xu, J.-H. (2014). A Smart Library of Epoxide Hydrolase Variants and the Top Hits for Synthesis of (S)- β -Blocker Precursors. *Angew. Chem. Int. Ed.* 53 (26), 6641–6644. doi:10.1002/anie.201402653
- Kong, X.-D., Yuan, S., Li, L., Chen, S., Xu, J.-H., and Zhou, J. (2014). Engineering of an Epoxide Hydrolase for Efficient Bioresolution of Bulky Pharmacological Substrates. *Proc. Natl. Acad. Sci. U.S.A.* 111 (44), 15717–15722. doi:10.1073/pnas.1404915111
- Kren, V., and Martinkova, L. (2012). Glycosides in Medicine: “The Role of Glycosidic Residue in Biological Activity. *Curr. Med. Chem.* 8 (11), 1303–1328. doi:10.2174/0929867013372193
- Kuipers, R. K., Joosten, H.-J., van Berkel, W. J. H., Leferink, N. G. H., Rooijen, E., Ittmann, E., et al. (2010). 3DM: Systematic Analysis of Heterogeneous Superfamily Data to Discover Protein Functionalities. *Proteins* 78 (9), NA. doi:10.1002/prot.22725
- Leveson-Gower, R. B., Mayer, C., and Roelfes, G. (2019). The Importance of Catalytic Promiscuity for Enzyme Design and Evolution. *Nat. Rev. Chem.* 3 (12), 687–705. doi:10.1038/s41570-019-0143-x
- Li, A., Wang, T., Tian, Q., Yang, X., Yin, D., Qin, Y., et al. (2021). Single-Point Mutant Inverts the Stereoselectivity of a Carbonyl Reductase toward β -Ketoesters with Enhanced Activity. *Chem. Eur. J.* 27 (20), 6283–6294. doi:10.1002/chem.202005195
- Li, A., Ye, L., Yang, X., Yang, C., Gu, J., and Yu, H. (2016). Structure-guided Stereoselectivity Inversion of a Short-Chain Dehydrogenase/reductase toward Halogenated Acetophenones. *Chem. Commun.* 52 (37), 6284–6287. doi:10.1039/c6cc00051g
- Li, F.-L., Kong, X.-D., Chen, Q., Zheng, Y.-C., Xu, Q., Chen, F.-F., et al. (2018). Regioselectivity Engineering of Epoxide Hydrolase: Near-Perfect Enantioconvergence through a Single Site Mutation. *ACS Catal.* 8 (9), 8314–8317. doi:10.1021/acscatal.8b02622
- Li, G., Garcia-Borrás, M., Fürst, M. J. L., Ilie, A., Fraaije, M. W., Houk, K. N., et al. (2018). Overriding Traditional Electronic Effects in Biocatalytic Baeyer-Villiger Reactions by Directed Evolution. *J. Am. Chem. Soc.* 140 (33), 10464–10472. doi:10.1021/jacs.8b04742
- Li, R., Wijma, H. J., Song, L., Cui, Y., Otzen, M., Tian, Y. e., et al. (2018). Computational Redesign of Enzymes for Regio- and Enantioselective Hydroamination. *Nat. Chem. Biol.* 14 (7), 664–670. doi:10.1038/s41589-018-0053-0
- Liao, H., Ma, J., Yao, H., and Liu, X.-W. (2018). Recent Progress of C-Glycosylation Methods in the Total Synthesis of Natural Products and Pharmaceuticals. *Org. Biomol. Chem.* 16 (11), 1791–1806. doi:10.1039/c8ob00032h
- Lichman, B. R., Gershater, M. C., Lamming, E. D., Pesnot, T., Sula, A., Keep, N. H., et al. (2015). “Dopamine-first” Mechanism Enables the Rational Engineering of the Norocloaurine Synthase Aldehyde Activity Profile. *FEBS J.* 282 (6), 1137–1151. doi:10.1111/febs.13208
- Liu, B., Qu, G., Li, J. K., Fan, W., Ma, J. A., Xu, Y., et al. (2019). Conformational Dynamics-Guided Loop Engineering of an Alcohol Dehydrogenase: Capture, Turnover and Enantioselective Transformation of Difficult-to-Reduce Ketones. *Adv. Synth. Catal.* 361 (13), 3182–3190. doi:10.1002/adsc.201900249
- Liu, C., Wen, K. G., Zeng, X. P., and Peng, Y. Y. (2020). Advances in Chemocatalytic Asymmetric Baeyer-Villiger Oxidations. *Adv. Synth. Catal.* 362 (5), 1015–1031. doi:10.1002/adsc.201901178
- Liu, Z., and Arnold, F. H. (2021). New-to-nature Chemistry from Old Protein Machinery: Carbene and Nitrene Transferases. *Curr. Opin. Biotechnol.* 69, 43–51. doi:10.1016/j.copbio.2020.12.005
- Lonsdale, R., and Reetz, M. T. (2015). Reduction of α,β -Unsaturated Ketones by Old Yellow Enzymes: Mechanistic Insights from Quantum Mechanics/Molecular Mechanics Calculations. *J. Am. Chem. Soc.* 137 (46), 14733–14742. doi:10.1021/jacs.5b08687
- Louka, S., Barry, S. M., Heyes, D. J., Mubarak, M. Q. E., Ali, H. S., Alkhalaf, L. M., et al. (2020). Catalytic Mechanism of Aromatic Nitration by Cytochrome P450 TxtE: Involvement of a Ferric-Peroxy Intermediate. *J. Am. Chem. Soc.* 142 (37), 15764–15779. doi:10.1021/jacs.0c05070
- Lovelock, S. L., Crawshaw, R., Basler, S., Levy, C., Baker, D., Hilvert, D., et al. (2022). The Road to Fully Programmable Protein Catalysis. *Nature* 606, 49–58. doi:10.1038/s41586-022-04456-z
- MacDonald, D. S., Garrabou, X., Klaus, C., Verez, R., Mori, T., and Hilvert, D. (2020). Engineered Artificial Carboligases Facilitate Regioselective Preparation of Enantioenriched Aldol Adducts. *J. Am. Chem. Soc.* 142 (23), 10250–10254. doi:10.1021/jacs.0c02351
- Maria-Solano, M. A., Romero-Rivera, A., and Osuna, S. (2017). Exploring the Reversal of Enantioselectivity on a Zinc-dependent Alcohol Dehydrogenase. *Org. Biomol. Chem.* 15 (19), 4122–4129. doi:10.1039/c7ob00482f
- Marshall, J. R., Mangas-Sanchez, J., and Turner, N. J. (2021). Expanding the Synthetic Scope of Biocatalysis by Enzyme Discovery and Protein Engineering. *Tetrahedron* 82, 131926. doi:10.1016/j.tet.2021.131926
- McIntosh, J. A., Benkovic, T., Silverman, S. M., Huffman, M. A., Kong, J., Maligras, P. E., et al. (2021). Engineered Ribosyl-1-Kinase Enables Concise Synthesis of Molnupiravir, an Antiviral for COVID-19. *ACS Cent. Sci.* 7 (12), 1980–1985. doi:10.1021/acscentsci.1c00608
- Messiha, H. L., Ahmed, S. T., Karuppiah, V., Suardiaz, R., Ascue Avalos, G. A., Fey, N., et al. (2018). Biocatalytic Routes to Lactone Monomers for Polymer Production. *Biochemistry* 57 (13), 1997–2008. doi:10.1021/acs.biochem.8b00169
- Meyer, D., Walter, L., Kolter, G., Pohl, M., Müller, M., and Tittmann, K. (2011). Conversion of Pyruvate Decarboxylase into an Enantioselective Carboligase with Biosynthetic Potential. *J. Am. Chem. Soc.* 133 (10), 3609–3616. doi:10.1021/ja110236w
- Miller, D. C., Lal, R. G., Marchetti, L. A., and Arnold, F. H. (2022). Biocatalytic One-Carbon Ring Expansion of Aziridines to Azetidines via a Highly Enantioselective [1,2]-Stevens Rearrangement. *J. Am. Chem. Soc.* 144 (11), 4739–4745. doi:10.1021/jacs.2c00251
- Minami, A., and Oikawa, H. (2016). Recent Advances of Diels-Alderase Involved in Natural Product Biosynthesis. *J. Antibiot.* 69 (7), 500–506. doi:10.1038/ja.2016.67
- Mondal, D., Kolev, V., and Warshel, A. (2020). Combinatorial Approach for Exploring Conformational Space and Activation Barriers in Computer-Aided Enzyme Design. *ACS Catal.* 10 (11), 6002–6012. doi:10.1021/acscatal.0c01206
- Mordhorst, S., and Andexer, J. N. (2020). Round, Round We Go - Strategies for Enzymatic Cofactor Regeneration. *Nat. Prod. Rep.* 37 (10), 1316–1333. doi:10.1039/d0np00004c
- Nagano, S., and Poulos, T. L. (2005). Crystallographic Study on the Dioxygen Complex of Wild-type and Mutant Cytochrome P450cam. *J. Biol. Chem.* 280 (36), 31659–31663. doi:10.1074/jbc.M505261200
- Nidetzky, B., Gutmann, A., and Zhong, C. (2018). Leloir Glycosyltransferases as Biocatalysts for Chemical Production. *ACS Catal.* 8 (7), 6283–6300. doi:10.1021/acscatal.8b00710
- Nie, Y., Wang, S., Xu, Y., Luo, S., Zhao, Y.-L., Xiao, R., et al. (2018). Enzyme Engineering Based on X-Ray Structures and Kinetic Profiling of Substrate Libraries: Alcohol Dehydrogenases for Stereospecific Synthesis of a Broad Range of Chiral Alcohols. *ACS Catal.* 8 (6), 5145–5152. doi:10.1021/acscatal.8b00364
- Ortmayer, M., Fisher, K., Basran, J., Wolde-Michael, E. M., Heyes, D. J., Levy, C., et al. (2020). Rewiring the “Push-Pull” Catalytic Machinery of a Heme Enzyme Using an Expanded Genetic Code. *ACS Catal.* 10 (4), 2735–2746. doi:10.1021/acscatal.9b05129
- Ostertag, E., Zheng, L., Broger, K., Stehle, T., Li, S.-M., and Zocher, G. (2021). Reprogramming Substrate and Catalytic Promiscuity of Tryptophan Prenyltransferases. *Journal of Molecular Biology.* 433 (2), 166726. doi:10.1016/j.jmb.2020.11.025
- Padhi, S. K., Bougioukou, D. J., and Stewart, J. D. (2009). Site-saturation Mutagenesis of Tryptophan 116 of *Saccharomyces Pastorianus* Old Yellow Enzyme Uncovers Stereocomplementary Variants. *J. Am. Chem. Soc.* 131 (9), 3271–3280. doi:10.1021/ja8081389
- Pompeu, Y. A., Sullivan, B., and Stewart, J. D. (2013). X-ray Crystallography Reveals How Subtle Changes Control the Orientation of Substrate Binding in an Alkene Reductase. *ACS Catal.* 3 (10), 2376–2390. doi:10.1021/cs400622e
- Pompeu, Y. A., Sullivan, B., Walton, A. Z., and Stewart, J. D. (2012). Structural and Catalytic Characterization of *Pichia Stipitis* OYE 2.6, a Useful Biocatalyst for Asymmetric Alkene Reductions. *Adv. Synth. Catal.* 354 (10), 1949–1960. doi:10.1002/adsc.201200213
- Poulos, T. L. (2014). Heme Enzyme Structure and Function. *Chem. Rev.* 114 (7), 3919–3962. doi:10.1021/cr400415k
- Qin, F., Qin, B., Mori, T., Wang, Y., Meng, L., Zhang, X., et al. (2016). Engineering of *Candida Glabrata* Ketoreductase 1 for Asymmetric Reduction of α -Halo Ketones. *ACS Catal.* 6 (9), 6135–6140. doi:10.1021/acscatal.6b01552

- Qin, F., Qin, B., Zhang, W., Liu, Y., Su, X., Zhu, T., et al. (2018). Discovery of a Switch between Prelog and Anti-prelog Reduction toward Halogen-Substituted Acetophenones in Short-Chain Dehydrogenase/Reductases. *ACS Catal.* 8 (7), 6012–6020. doi:10.1021/acscatal.8b00807
- Qu, G., Bi, Y., Liu, B., Li, J., Han, X., Liu, W., et al. (2021). Unlocking the Stereoselectivity and Substrate Acceptance of Enzymes: Proline-Induced Loop Engineering Test. *Angew. Chem.* 134. doi:10.1002/ange.202110793
- Reetz, M. T., and Wu, S. (2009). Laboratory Evolution of Robust and Enantioselective Baeyer–Villiger Monooxygenases for Asymmetric Catalysis. *J. Am. Chem. Soc.* 131 (42), 15424–15432. doi:10.1021/ja906212k
- Richter, F., Leaver-Fay, A., Khare, S. D., Bjelic, S., and Baker, D. (2011). De Novo enzyme Design Using Rosetta3. *PLoS ONE* 6 (5), e19230–12. doi:10.1371/journal.pone.0019230
- Rüthlein, E., Classen, T., Dobnikar, L., Schölzel, M., and Pietruszka, J. (2015). Finding the Selectivity Switch - A Rational Approach toward Stereocomplementary Variants of the Ene Reductase YqjM. *Adv. Synth. Catal.* 357 (8), 1775–1786. doi:10.1002/adsc.201500149
- Sato, M., Kishimoto, S., Yokoyama, M., Jamieson, C. S., Narita, K., Maeda, N., et al. (2021). Catalytic Mechanism and Endo-To-Exo Selectivity Reversion of an Octalin-Forming Natural Diels-Alderase. *Nat. Catal.* 4 (3), 223–232. doi:10.1038/s41929-021-00577-2
- Savile, C. K., Janey, J. M., Mundorff, E. C., Moore, J. C., Tam, S., Jarvis, W. R., et al. (2010). Biocatalytic Asymmetric Synthesis of Chiral Amines from Ketones Applied to Sitagliptin Manufacture. *Science. Am. Assoc. Adv. Sci.* 329 (5989), 305–309. doi:10.1126/science.1188934
- Schwizer, F., Okamoto, Y., Heinisch, T., Gu, Y., Pellizzoni, M. M., Lebrun, V., et al. (2018). Artificial Metalloenzymes: Reaction Scope and Optimization Strategies. *Chem. Rev.* 118 (1), 142–231. doi:10.1021/acs.chemrev.7b00014
- Serapian, S. A., and Van Der Kamp, M. W. (2019). Unpicking the Cause of Stereoselectivity in Actinorhodin Ketoreductase Variants with Atomistic Simulations. *ACS Catal.* 9 (3), 2381–2394. doi:10.1021/acscatal.8b04846
- Skalden, L., Peters, C., Dickerhoff, J., Nobili, A., Joosten, H.-J., Weisz, K., et al. (2015). Two Subtle Amino Acid Changes in a Transaminase Substantially Enhance or Invert Enantiopreference in Cascade Syntheses. *ChemBioChem* 16 (7), 1041–1045. doi:10.1002/cbic.201500074
- Stockinger, P., Borlinghaus, N., Sharma, M., Aberle, B., Grogan, G., Pleiss, J., et al. (2021). Inverting the Stereoselectivity of an NADH-Dependent Imine-Reductase Variant. *ChemCatChem* 13, 5210–5215. doi:10.1002/cctc.202101057
- Stok, J. E., Giang, P. D., Wong, S. H., and De Voss, J. J. (2019). Exploring the Substrate Specificity of Cytochrome P450cin. *Archives Biochem. Biophysics* 672 (July), 108060. doi:10.1016/j.abb.2019.07.025
- Sun, W., Xue, H., Liu, H., Lv, B., Yu, Y., Wang, Y., et al. (2020). Controlling Chemo- and Regioselectivity of a Plant P450 in Yeast Cell toward Rare Licorice Triterpenoid Biosynthesis. *ACS Catal.* 10 (7), 4253–4260. doi:10.1021/acscatal.0c00128
- Toogood, H. S., and Scrutton, N. S. (2018). Discovery, Characterization, Engineering, and Applications of Ene-Reductases for Industrial Biocatalysis. *ACS Catal.* 8 (4), 3532–3549. doi:10.1021/acscatal.8b00624
- Toogood, H. S., and Scrutton, N. S. (2014). New Developments in 'ene'-Reductase Catalysed Biological Hydrogenations. *Curr. Opin. Chem. Biol.* 19 (1), 107–115. doi:10.1016/j.cbpa.2014.01.019
- Varadi, M., Anyango, S., Deshpande, M., Nair, S., Natassia, C., Yordanova, G., et al. (2022). AlphaFold Protein Structure Database: Massively Expanding the Structural Coverage of Protein-Sequence Space with High-Accuracy Models. *Nucleic Acids Res.* 50 (D1), D439–D444. doi:10.1093/nar/gkab1061
- Vogel, A., Schmiedel, R., Hofmann, U., Gruber, K., and Zangger, K. (2014). Converting Aspartase into a β -Amino Acid Lyase by Cluster Screening. *ChemCatChem* 6 (4), 965–968. doi:10.1002/cctc.201300986
- Walton, A. Z., Conerly, W. C., Pompeu, Y., Sullivan, B., and Stewart, J. D. (2011). Biocatalytic Reductions of Baylis-Hillman Adducts. *ACS Catal.* 1 (9), 989–993. doi:10.1021/cs200223f
- Wang, J.-b., Li, G., and Reetz, M. T. (2017). Enzymatic Site-Selectivity Enabled by Structure-Guided Directed Evolution. *Chem. Commun.* 53 (28), 3916–3928. doi:10.1039/c7cc00368d
- Wang, S., Nie, Y., Xu, Y., Zhang, R., Ko, T.-P., Huang, C.-H., et al. (2014). Unconserved Substrate-Binding Sites Direct the Stereoselectivity of Medium-Chain Alcohol Dehydrogenase. *Chem. Commun.* 50 (58), 7770–7772. doi:10.1039/c4cc01752h
- Wang, Y., Xue, P., Cao, M., Yu, T., Lane, S. T., and Zhao, H. (2021). Directed Evolution: Methodologies and Applications. *Chem. Rev.* 121 (20), 12384–12444. doi:10.1021/acs.chemrev.1c00260
- Wechsler, C., Meyer, D., Loschonsky, S., Funk, L.-M., Neumann, P., Ficner, R., et al. (2015). Tuning and Switching Enantioselectivity of Asymmetric Carbonylation in an Enzyme through Mutational Analysis of a Single Hot Spot. *ChemBioChem* 16 (18), 2580–2584. doi:10.1002/cbic.201500529
- Wen, Z., Zhang, Z.-M., Zhong, L., Fan, J., Li, M., Ma, Y., et al. (2021). Directed Evolution of a Plant Glycosyltransferase for Chemo- and Regioselective Glycosylation of Pharmaceutically Significant Flavonoids. *ACS Catal.* 11, 14781–14790. doi:10.1021/acscatal.1c04191
- Wijma, H. J., Floor, R. J., Bjelic, S., Marrink, S. J., Baker, D., and Janssen, D. B. (2015). Enantioselective Enzymes by Computational Design and In Silico Screening. *Angew. Chem.* 127 (12), 3797–3801. doi:10.1002/ange.201411415
- Winkler, C. K., Schrittwieser, J. H., and Kroutil, W. (2021). Power of Biocatalysis for Organic Synthesis. *ACS Cent. Sci.* 7 (1), 55–71. doi:10.1021/acscentsci.0c1496
- Wu, S., Acevedo, J. P., and Reetz, M. T. (2010). Induced Allostery in the Directed Evolution of an Enantioselective Baeyer-Villiger Monooxygenase. *Proc. Natl. Acad. Sci. U.S.A.* 107 (7), 2775–2780. doi:10.1073/pnas.0911656107
- Yang, B., and Gao, S. (2018). Recent Advances in the Application of Diels-Alder Reactions Involving O-Quinodimethanes, Aza-O-Quinone Methides and O-Quinone Methides in Natural Product Total Synthesis. *Chem. Soc. Rev.* 47 (21), 7926–7953. doi:10.1039/c8cs00274f
- Yang, K. K., Wu, Z., and Arnold, F. H. (2019). Machine-learning-guided Directed Evolution for Protein Engineering. *Nat. Methods* 16 (8), 687–694. doi:10.1038/s41592-019-0496-6
- Yu, J., Song, J., Chi, C., Liu, T., Geng, T., Cai, Z., et al. (2021). Functional Characterization and Crystal Structure of the Bifunctional Thioesterase Catalyzing Epimerization and Cyclization in Skyllamycin Biosynthesis. *ACS Catal.* 11 (18), 11733–11741. doi:10.1021/acscatal.1c03064
- Zhang, D., Chen, X., Chi, J., Feng, J., Wu, Q., and Zhu, D. (2015). Semi-Rational Engineering a Carbonyl Reductase for the Enantioselective Reduction of β -Amino Ketones. *ACS Catal.* 5 (4), 2452–2457. doi:10.1021/acscatal.5b00226
- Zhang, J., Liao, D., Chen, R., Zhu, F., Ma, Y., Gao, L., et al. (2022). Tuning an Imine Reductase for the Asymmetric Synthesis of Azacycloalkylamines by Concise Structure-Guided Engineering. *Angew. Chem. Int. Ed.* 61, 300457. doi:10.1002/anie.202201908
- Zhang, M., Yi, Y., Gao, B. H., Su, H. F., Bao, Y. O., Shi, X. M., et al. (2021). Functional Characterization and Protein Engineering of a Triterpene 3-/6-/2'-O-Glycosyltransferase Reveal a Conserved Residue Critical for the Regiospecificity. *Angew. Chem.* 134, 230026. doi:10.1002/ange.202113587
- Zhang, R. K., Huang, X., and Arnold, F. H. (2019). Selective C-H Bond Functionalization with Engineered Heme Proteins: New Tools to Generate Complexity. *Curr. Opin. Chem. Biol.* 49, 67–75. doi:10.1016/j.cbpa.2018.10.004
- Zhou, Q., Chin, M., Fu, Y., Liu, P., and Yang, Y. (2021). Stereodivergent Atom-Transfer Radical Cyclization by Engineered Cytochromes P450. *Science* 374 (6575), 1612–1616. doi:10.1126/science.abk1603

Conflict of Interest: The authors declare that the research was conducted in the absence of any commercial or financial relationships that could be construed as a potential conflict of interest.

Publisher's Note: All claims expressed in this article are solely those of the authors and do not necessarily represent those of their affiliated organizations, or those of the publisher, the editors, and the reviewers. Any product that may be evaluated in this article, or claim that may be made by its manufacturer, is not guaranteed or endorsed by the publisher.

Copyright © 2022 Ding, Perez-Ortiz, Peate and Barry. This is an open-access article distributed under the terms of the Creative Commons Attribution License (CC BY). The use, distribution or reproduction in other forums is permitted, provided the original author(s) and the copyright owner(s) are credited and that the original publication in this journal is cited, in accordance with accepted academic practice. No use, distribution or reproduction is permitted which does not comply with these terms.